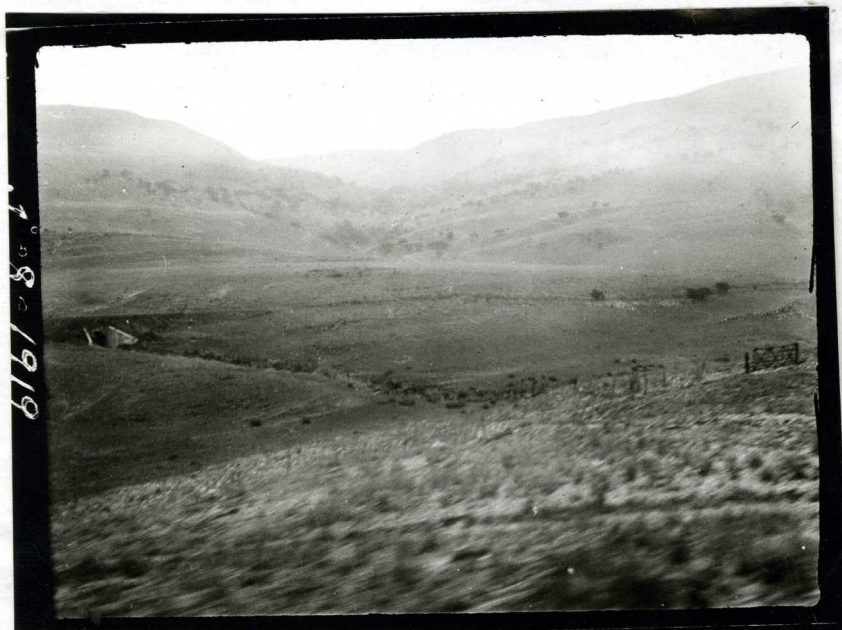


- S.P.I. 48816 *Linum usitatissimum*, a standard flax of the high veld.
" 48808 *Chaetochloa italica*, Boer manna.
" 48813 *Cucurbita maxima* A Boer pumpkin, used for stock and also for human consumption.
" 48814 *Cucurbita pepo* Marrow, for table use.
" 48820 Boer pea, especially for use in summer when the ordinary garden peas fail on account of the heat.

October 18, Pretoria to Nelspruit. I left Pretoria the night of October 17 and it first became daylight at Belfast. This country looks exactly like the high plains. Soil dark for about 1 foot and lighter below. There is an occasional ranch and an occasional tree.

Dalmanutha.



j-8. A great broad valley with an occasional tree planted. The soil here is deep and red. The grasses have just started. They produce a fairly good cover and there are occasional flowers.



j-10. Rolling grassland with eucalyptus plantings.

Machododorp. Here there are a lot of trees planted near the station. They are principally pepper, eucalyptus, pine, weeping willow, apricot, peach and many grape vines. The country is less settled than about Akron, Colorado, but looks a good deal like it. Wheat and oats are grown and there are weeping willows. The rock near the surface seems to be granitic. Over this rock the river has cut its channel. The grasses come down to the water's edge. There are many white Amaryllis lilies here, also a great display of flowers, yellow lilies, fiery-red buphany, Elephantorrhiza. Here there are many old Kafir locations.

Most of the country is burned over. It is pure grassland with no trees. Along the railway bank vegetation is largely bracken. The railroad drops over the edge through a series of tunnels and deep cuts.



4-11-1919

J. 11-1919



j-12. Was taken just above the ^{erks} brackens.



k-1. Shows the upper edge of the escarpment.



k-2.. Showing the escarpment as viewed from below. Natives burn off the grass. The rock is not a granitic, but seems very similar to that which occurs on some of the mountain ranges in New Mexico,---more or less metamorphic rock.

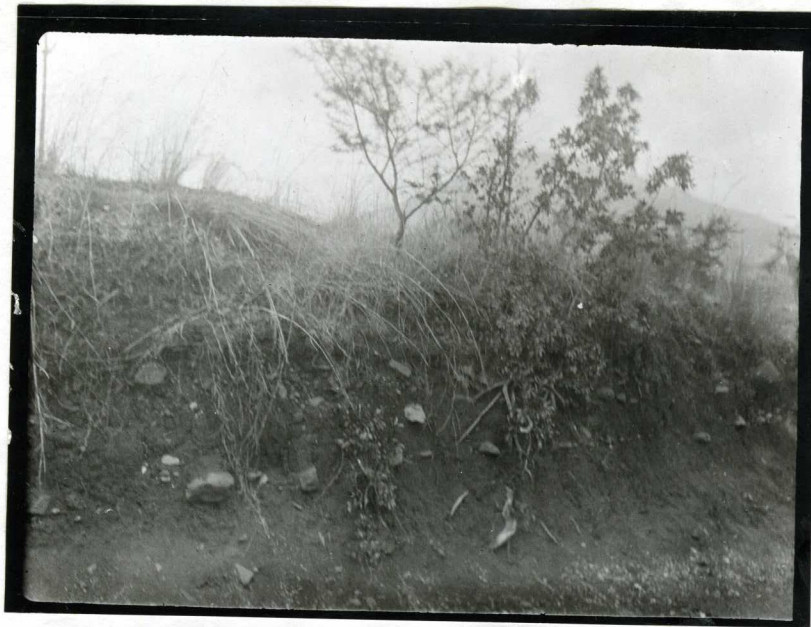
k-3. A little below the drop, looking up stream.

Combrytum is now in flower and aloes are abundant. Cultivation consists of small patches of oats and citrus. It is a grass country with many trees scattered through. In the canons, however, the trees predominate.

At Codwan river there are many young citrus orchards.

Just below Elandshoek.

k-4. Station parking at Watervale.



k-5. A soil bank, soil red to a depth of 7 feet.



k-6. Young citrus orchards on the Codwan river.