

19791
Pam. 35
(1934)

GUEST RANCHES



ON LINES OF
Southern Pacific



Life On a Guest Ranch

Nor so very many years ago some inspired soul looking for novelty, and more resourceful than his fellows, conceived the happy idea of spending his precious vacation time on a western cattle ranch. He came. The ranch took him in. He was made a member of the family and he entered into its life. Days spent in the open, in the saddle, and nights under the whispering stars wrought their miracles as they always do, and when our vacationist returned to his home tanned, husky, bubbling with renewed vigor, and brimming with vitality, his friends marveled—and followed his example. So popular has this form of holiday become that today there is an increasingly

large number of ranches that cater regularly to these visitors. This booklet is to acquaint you with these guest ranches.

How firm a hold ranch life takes upon the visitor may be inferred from the fact that there are many people who come back to their favorite ranch year after year for relaxation, rest and sport. It is not unusual for visitors to come for a two weeks' stay, and remain for several months. The record is held by a man who arrived at a guest ranch five years ago for a short stay—and is still there. When people take to the life on a guest ranch so strongly there must be some very compelling reason.



Life on a ranch is altogether what the visitor may wish to make it. It may be "the sweet pleasure of doing nothing," with restful, lazy hours, spent, book in hand, at the ranch house, or one's own cabin, or beneath the shade of some old forest monarch. One may drowse and dream, or, as the old prospector put it, "jest drowse." On the other hand, it may be as active an existence as any one could wish. One may join the cowboys as they canter off into the hills or down into the valleys in the course of their daily work; or with canteen and lunch, ride or hike alone or with a party on mountain picnics or excursions of exploration.

On every ranch the chief diversion, naturally, is horseback riding. At most ranches the guest is assigned, immediately upon his arrival, a mount and equipment for his exclusive use so long as he remains. The experience of the rider is carefully considered and his horse furnished according thereto. For those who have not ridden before, mounts docile enough to reassure the most timid are supplied and instruction in riding given. For the guest who likes them spirited, and can handle them, horses are available that will test his prowess in the saddle. Most guests become enthusiastic horsemen

after a few days and are as much at home in the saddle as the regular cowboys.

Some ranches have tennis courts, putting greens and a few holes of practice golf. Others have swimming pools, target ranges, and other entertainment. Many ranches offer excellent hunting and fishing in season—small game on the ranch itself, and big game such as bear, mountain lion, deer, etc., in nearby mountains.

Usually, after a day on the range or in the hills, the thoughts of bed and repose fill the mind to the exclusion of most other matters, and shortly after dinner one is usually well content to "call it a day" and to seek the deep and dreamless sleep that comes to tired bodies and relaxed nerves. However, if one is inclined to play in the evening, there are cards and dancing. Often a picnic by moonlight is arranged, where the guests gather around a roaring campfire and listen to some old-timer spin yarns of the old romantic west, or to the cowboys singing their age old ballads to the accompaniment of banjo and guitar.

Some of the ranches are genuine old-time cattle ranches, still running herds that number into the thousands. Others are old ranches on which cattle are



no longer raised. Still others are modern plants, built at the most advantageous points for the definite purpose of entertaining the tourist who wishes to "rough it" de luxe.

What to Wear

There is little style about a guest ranch and the atmosphere is essentially democratic. Many changes of outer clothing are not necessary. For women, medium weight riding habits, hiking clothes, sweaters and the usual outdoor clothes. Men wear riding breeches, chaparejos or blue jeans, flannel shirts, etc. Boots that you care much for should not be worn as they would be scratched in riding or hiking through the brush. Everyone should be provided with leather jacket, coat or sweater for wear after sunset, and a flashlight. In general, comfort is aimed at, rather than style.

Guest Ranch Seasons

The principal season of the Southern Arizona ranches and at Palm Springs is in the winter time, although there are a number of ranches in Arizona and New Mexico that are open the year around. There are both summer and winter guest ranches in Texas. The Ne-

vada ranches are open the year around, as are the guest ranches in California.

Children

Many of the ranches have special facilities for children where they learn to ride under the expert guidance of cowboys, and the horses assigned to them are always safe and gentle. Many ranches maintain bus service to nearby grade and high schools; others are located on regular school bus lines. A few ranches have special school facilities with trained tutors and supervisors.

The description of each ranch given in the following pages is necessarily brief and if further information is desired you can write to your nearest Southern Pacific representative who will be glad to get further information for you on the ranch in which you may be interested. Or you can write direct to the ranch. Accommodations are limited and reservations should be made in advance. Rates quoted in this folder are accurate at publication but are subject to change. None of these ranches will accept as guests persons with communicable diseases.



Arizona Guest Ranches

Bar F X Ranch, Wickenburg, Ariz., Mary P. O'Brien, manager. Accommodations in main cabin and comfortable guest cabins. Horseback riding, hunting, tennis, etc. Rates \$35 per week and up. *Season October to June.*

Bar O Ranch. Harry C. Kendall, owner, Tombstone, Ariz. Comprises twenty miles of mountain and valley located against Dragoon Mountains at elevation of 5,500 feet, overlooking San Pedro Valley commanding unsurpassed distant mountain view. One of the oldest cattle ranches in country; is still actively engaged in that business, thus affording guests an opportunity to participate in real cowboy fashion. This is hunting ground of old Apache Indian Chief "Cochise"; Cochise Stronghold, where he made his last stand, is only a day's ride away. Take Southern Pacific to either Benson or Fairbank, where train is met by ranch car, on advance notice. Capacity 20 guests, who occupy guest cabins in grove of live oaks. Rates \$50 a week, \$160 a month, including use of horse. *Open year round.*

Bar Thirty-Seven Ranch, Ned Andrews proprietor. Located 50 miles northwest of Prescott, elevation 5,800 feet. A cow ranch with all modern conveniences for guests. Good hunting in season. Rates \$50 a week. *Open all year.*

Bishop's Guest Ranch is located in the heart of the fertile Salt River Valley two miles from Tempe and eleven miles from Phoenix. The ranch car will meet guests either in Phoenix or Tempe by appointment.

The ranch is modern in every detail, caters to a small number of guests who will find rest and comfortable quiet or who may enjoy active outdoor life.

Good home cooked food is served with plenty of milk, eggs, and vegetables fresh from the ranch. Special diets are catered to as desired.

Automobile trips are made to points of interest and picnic lunches are often had on the desert.

Those suffering from communicable diseases cannot be accommodated.

Rates are \$60.00 per month with a small additional charge for saddle horses. Ranch is open all year. Address Mrs. R. G. Bishop, Tempe, Arizona. Phone 8 J 5.

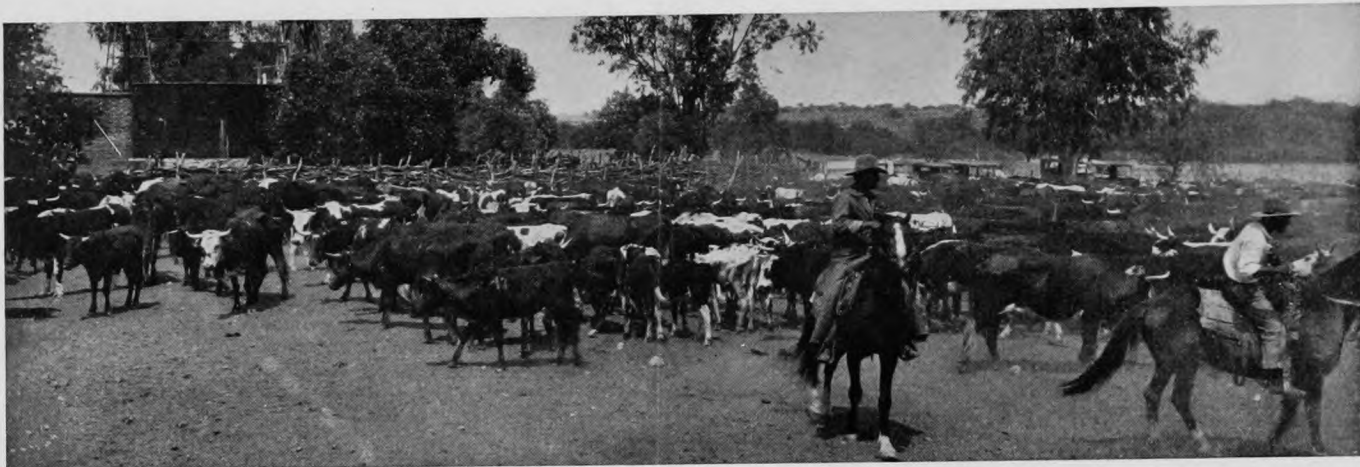
Broken Arrow Ranch. Managed by Jack Hoxie, western movie star, is located at the foot of the Huachuca Mountains facing San Pedro Valley near Hereford, Arizona.

The Broken Arrow Ranch is open the entire year due to the wonderful days of sunshine in the winter, and during the summer it is comfortably warm. Blankets will be found comfortable during the summer nights. The comfort and enjoyment of the guests is looked out for at all times. Pack trips into the mountains are easily arranged. Trips into Old Mexico, which is only a short distance from the ranch, will be found very interesting.

The cabins are clean and comfortably furnished, have single and double cabins, also family bungalows. Excellent meals served. Ranch is modernly equipped including electric lights. There are occasional rodeos and dances, and some of the principal entertainments are horseback riding, hiking, swimming, tennis, horse shoe pitching, and pack trips.



Youngsters get the thrill of the Wild West



There are good schools nearby, with school bus running within a quarter-mile of the ranch house. We have daily mail service, and good telephone connections.

Mr. Hoxie keeps his movie and circus horses and dogs at the ranch and you may see them practicing their stunts. Also here one may encounter the celebrities of the movie and circus world. Living at the ranch are several people who have assisted Mr. Hoxie in both movie and circus work.

Mrs. Hoxie, known as Miss Dixie Starr in pictures and in the circus, is hostess of the ranch. Miss Starr is an accomplished rider and rifle and pistol shot. She will be glad to welcome you and see that you are well taken care of at the ranch during your stay.

Rates are \$35 per week and up. Everything except horse included. Guests will be met by appointment at Hereford, Ariz.

Circle "Z" Ranch. Address, Lee G. Zinsmeister, Circle "Z" Ranch, Patagonia, Arizona. Take Southern Pacific to Nogales, or Fairbank, where guests are met and transported to ranch.



Off for a morning's jaunt at one of the Guest Ranches

Offers every convenience of city home, together with all attractions of ranch life. Guests are housed in bungalows of four rooms and two baths, containing tub, shower and toilet, or rooms with private baths. Electric lights, steam heat, hot and cold water. Tennis court, putting green, target range, swimming.

Located in Patagonia Mountains, altitude 4,000 feet, amid most beautiful surroundings. Cabin in Santa Rita Mountains, 18 miles, reached only by horseback. Rates \$45 a week and up; this includes everything ranch has to offer except personal laundry. *Season October 1 to May 1.*

C-4 Guest Ranch, Wickenburg, Arizona, A. R. Lockie, owner. Fred Gyberg, manager and foreman. May be reached by taking Southern Pacific to Phoenix thence connecting line to Wickenburg. Elevation 2,250 feet. Accommodations for 20 people in new ranch house with modern conveniences. Rates \$30 per week up. *Season September 1st to June 1st.*

Cross Triangle Ranch, Prescott, Arizona. Owned by The Seven V Ranches, Barney H. York, president. Located 25 miles northwest of Prescott at an elevation of 4,600 feet. Guests housed in cabins accommodating 1, 2, 3 or 4 persons. Electric lights and telephone. Rates \$35 per week and up. *Open all summer.*

Faraway Ranch. Ed Riggs, manager, Dos Cabezas, Arizona. Take Southern Pacific to Willcox, Bisbee or Douglas where guests having reservations will be met by automobile.

Faraway Ranch is located at the Gateway to the Wonderland of Rocks, Chiricahua National Monument. Altitude 5,260 feet. Here horses and competent guides may be had for a never-to-be-forgotten trip into this wonderful region.

Guests are housed in main ranch house and adjoining cottages surrounded by orchard and garden, assuring supply of fresh vegetables for the table. Swimming pool supplied with fresh mountain water.

Rates \$25 a week; \$30 per week including use of saddle horse. Horses at \$2.50 for the Wonderland trip. *Open all year.*



Flying V Ranch, Lynn S. Gillham, manager, Tucson, Ariz. Take Southern Pacific to Tucson. Located at an altitude of 3,000 feet, high up on the southern foothills of the Catalina Mountains. Fifteen miles from Tucson, and 1,000 feet higher than the city—the lights of Tucson being visible at night from the ranch. Ranch is 30 minutes by auto from Tucson—an important factor for guests with children—yet the ranch is as completely isolated as though it were a hundred miles from the city. The ranch lies at the mouth of beautiful Rock Canyon, running for many miles back into the Catalinas. A mountain stream flows through the ranch within a hundred yards of the ranch house. Many thrilling and beautiful trail trips start from the very back door of the ranch—guests reach an altitude of 9,000 feet among giant pine and fir trees and high waterfalls within three and one-half hours by horseback from the ranch, where deer, wild boar, mountain lions, wild cats, big horn sheep, foxes and other game abound. Overnight pack trips into these regions a specialty. Flying V is a combination guest and cattle ranch, and guests may participate in the daily work of the cowboys—having lunch with them at the chuck wagon out on the open range. Polo is a major sport at the ranch, polo ponies being raised and trained, a full size sideboarded polo field maintained, match games being played weekly with neighboring teams. Polo instruction is given by players who carry United States Polo Association rating. An extensive jumping and steeplechase course is maintained. Amusement program embraces over twenty games that can be played by guests on horseback, including paper chases, treasure hunts on horseback, moonlight rides, steak dinners beside mountain streams and the famous Flying V

“bandit hunts”. Amusement facilities also include a large recreation room for music, dancing and other indoor pastimes, rifle range, archery range and a full size championship cement tennis court.

Guests are housed in stone and stucco cottages within convenient distance of the main ranch building, each cottage having electric lights, hot water twenty-four hours a day, wide windows on three sides, unit heat and all beds with inner-spring mattresses. Ample facilities for sun bathing. Individual guest tables in the dining room, with an abundance of good food, plenty of fresh eggs, milk, fresh fruits and vegetables. Special attention to diet menus and children’s food.

Rates \$50 per person per week and up, including horses and instruction in riding, roping, jumping and other phases of horsemanship—and everything else the ranch has to offer. Winter season October 1st to June 1st.

Fresnal Ranch School. Bryan F. Peters, owner, Tucson, Arizona. Take Southern Pacific to Tucson. Ranch is located in the Baboquivari Mountains at elevation of 4,000 feet, 52 miles southwest of Tucson. Ranch school for boys 11 to 18 years of age. Sound scholastic training. A horse for every boy. Healthful life with wholesome food and careful oversight. Fee \$1,800 for the school term, October 1 to May 20.

Garden of Allah Guest Ranch. Leeb Chapman, Wickenburg, Arizona. Take Southern Pacific to Phoenix, where ranch car meets guests by appointment.

Main ranch house of adobe, shaded by 80-year-old palms and cottonwoods; once stage station on old Tucson-Prescott trail, a few miles south of Wickenburg. Horseback riding (no extra charge for horses) main activity . . . up and down the Hassayampa River, across to desert water holes or to old mines. Modern conveniences, electrically lighted. Accommodations for about 15 guests. Swimming pool. Excellent home prepared meals. Rates \$35 per week, \$125 per month, and up. A limited number of rooms with private bath. *Season October 15 to June 1.*

Hacienda de La Osa. Address, Mrs. A. Hardgrave, Hacienda de La Osa, Tucson, Arizona. Take Southern Pacific to Tucson where guests will be met.

Located in Sasabe Valley between Mesa Verde and Santa Rita Mountains, 68 miles southwest of Tucson and one mile from Mexican border. Elevation 3,000 feet. One of the oldest ranches in Arizona, retaining the spirit and romance of the Old West.

Plenty of big game, such as mountain lion, bear, deer, wild hog, mountain sheep, nearby in Old Mexico; also deep sea fishing. Guides and camping equipment may be arranged for. Horseback and automobile trips to many interesting points in Arizona and Old Mexico.

Guest rooms in main ranch building; other buildings surrounding large patio offer separate quarters. Fireplace in each guest room, as well as in dining room and patio. Rates \$35 to \$65 a week. Includes all expenses except personal laundry, special motor and hunting trips. *Open all year.*

Hacienda Los Encinos. Mr. and Mrs. E. Neil Carr, Sonoita, Arizona. Fifty miles southeast of Tucson, 35 miles northeast of Nogales, 31 miles southwest of Fairbank. Guests will be met at Fairbank or at Pioneer Hotel, Tucson.

Marvelous views, hills on north, east and west. Elevation 4,800 feet. Adjoins Coronado National Forest Reserve. Attractive horseback riding either on rolling plains or through the mountains. Rates, from \$50 a week for single room with connecting bath, up to \$75 a week for a suite of rooms. Rates include use of horse and saddle equipment. *Open all year.*

Hayden Guest Ranch. Address, Hayden Guest Ranch, Tempe, Arizona. Located 2 miles from Tempe, 11 miles from Phoenix. Take Southern Pacific to either Phoenix or Tempe where ranch car will meet guests.

Here you may rest and enjoy life as you wish. Horses and guides always available. Guest cottages contain large living room, fireplace, two bedrooms and sunporch; are provided with electricity, furnace heat, hot and cold water, tub and shower. Rates \$35 to \$70 per week. Reduced monthly rates. *Open all year.*

H W Ranch, Chino Valley, Ariz., Sidney T. Fritsche, manager. Located northwest of Prescott at altitude of 4,500 feet. Riding, hunting, fishing, swimming. Best of saddle horses. Rates \$25 per week including horse. *Open all year.*

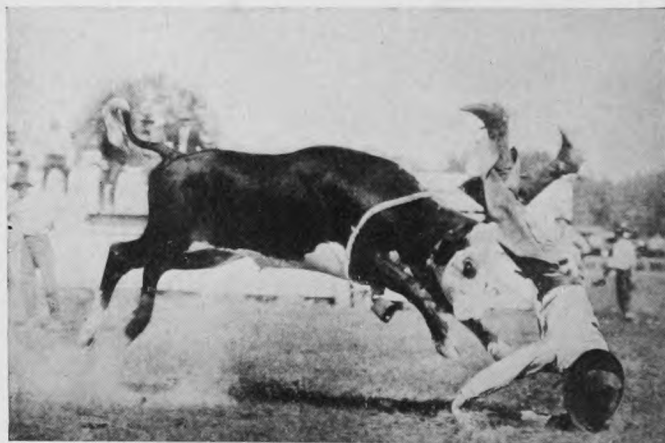
Jokake Inn. Address, Jokake, Scottsdale, Arizona. Take Southern Pacific to Phoenix. A guest ranch and winter hotel, ten miles from Phoenix and just outside the irrigated section of Salt River Valley, in a beautiful desert location. Camelback Mountain rises directly beyond Jokake.



Some of the Ranches have polo fields.



Ranch guests ready to explore Rock Canyon.



Real cowboys will thrill you at rodeos.



Plastered adobe buildings are warm and comfortable. Sunny patios and gardens. Atmosphere of the old Southwest. Week-end excursions to the mountain camp located 15 miles from Jokake at foot of McDowell range used as the base for many short trips over desert and mountain.

Accommodations for about 60 guests. All rooms have private bath and steam heat. Excellent horses, swimming pool, croquet grounds and tennis court. Only 15 minutes' drive to good golf course. Rates \$7 to \$12 per day. *Season November 1 to May 1.*

Kay-El-Bar Ranch. Henry Warbasse, owner, Wickenburg. Take Southern Pacific to Phoenix where ranch car meets guests by appointment. Fifty-eight miles northwest of Phoenix in sheltered valley between high mesas. Altitude 2,076 feet. A real western ranch with modern accommodations for 20 guests. All rooms large and sunny, each room equipped with shower and running hot and cold water; heated by hot air furnace. Rates \$50 a week, \$120 a month, and up. *Season Oct. 1 to June 1.*

Monte Vista Ranch. L. C. White, manager, Wickenburg, Arizona. Take Southern Pacific to Phoenix, where ranch car meets guests by appointment. Located on Hassayampa River, 52 miles from Phoenix at elevation of 2,200 feet. Commands fine view of surrounding mountains. Riding is the chief sport but arrangements may be made for hunting and pack trips in the Bradshaw Mountains or for motor trips to points of interest.

Modern guest houses, comfortably furnished; also detached cottages. Plenty of fresh cream, butter and eggs. Rates \$55 to

\$60 a week including saddle horse and guide. Reduction for family and monthly guests. *Season October 1 to June 1.*

Old Homestead Ranch. Mrs. A. Weiler, Route 5, Box 700, Phoenix, Arizona. Take Southern Pacific to Phoenix, where guests are met by ranch car. Four miles from Phoenix station. Ranch house in center of citrus orchard, which provides fruit for guests throughout winter. Usual ranch activities indulged in; guests are also able to visit theatres, shops, etc., of Phoenix. Ten guests can be accommodated. Equipped with electric lights, private baths, hot and cold water. Rates \$5.00 per day, \$25.00 per week, including saddle horse. *Season Oct. 1 to May 1.*

Paradise Valley Ranch, Prescott, Arizona, Clyde Roland, manager. Located three miles from Prescott, in the pines. Modern buildings, excellent cuisine. Good saddle stock. Ideal surroundings for artists, authors and athletes. Monthly rate \$75. *Season May-November 1.*

Pima Estate Ranch. Celeste H. Rauch, hostess, Route 1, Box 124, Laveen, Arizona. Take Southern Pacific to Phoenix where ranch car will meet you. Ranch is furnace heated and modern in every detail, is 14 miles southwest of Phoenix on edge of desert and close by Estrella Range. Forty minutes drive to Phoenix. Ride over solitary desert of the Pima Indian country or climb mountain trails and explore abandoned mines. Many desert picnics. Rates \$35 a week up. Special monthly rates on application. *Season October to May 15.*

Quarter Circle V Bar Ranch. Chas. Orme, manager, Mayer, Arizona, 90 miles north of Phoenix. Take Southern Pacific to Phoenix where guests will be met by ranch car. Altitude 3,890 feet. Rates, single \$45 a week, \$150 a month, double \$80 a week, \$300 a month, including horses and guide. *Open all year.*

Rancho Linda Vista. George S. Wilson, manager, Oracle, Arizona. Take Southern Pacific to Tucson where guests will be met by appointment.

Located 37 miles north of Tucson and 2 miles from beautiful little mountain village of Oracle, in Catalina Mountains at elevation of 4,500 feet. Ranch also maintains camp in the Cana-
da del Oro (Canyon of Gold) a few miles farther up in mountains. Here Harold Bell Wright wrote "The Mine With the Iron Door." Camp is used as base for hunting trips for bear, wolves, and mountain lion.

Linda Vista is a regular cattle ranch; many an impromptu wild west show is staged in course of day's work. Riding is chief diversion; inviting trails lead in every direction from ranch.

Accommodations for 45 to 50 guests, who are housed in modern cottages, well separated from each other, each with its own bathroom and hot and cold water. Rates \$40 to \$55 per week including saddle horses. *Open October to June.*

Remuda Guest Ranch. Jack Burden, owner, Wickenburg, Arizona. Take Southern Pacific to Phoenix where ranch car meets guests by appointment. Fifty-three miles northwest of Phoenix on Hassayampa River, altitude 2,076 feet. Modern Spanish type ranch buildings, appetizing meals with fresh fruits and vegetables always served. Horseback riding, day or overnight trips, cowboy guides. Occasional rodeos and dances. Hunting in season. Rates from \$5 to \$10 per day. Special family and monthly rates on request. *Season October 1 to June 1.*

Sahuaro Lake Ranch. Located on the Salt River and within a few minutes' walk of beautiful Sahuaro Lake, provides the unusual combination of Arizona Ranch life and climate, with excellent black bass fishing, swimming and motor boating. It is situated in the rugged and picturesque Apache Trail country and the Superstition Mountains of Indian Legend and Lost Dutchman Gold Mine fame are nearby. Typical ranch buildings which are equipped with every comfort and convenience. The main building has large living room with a unique four-way stone fireplace in the center of the room. Many Navajo rugs and trophies of the hunt create a pleasing Western atmosphere. The rooms in the main building have steam heat and running hot and cold water in each room, private or adjoining bath. Comfortably equipped cottages and cabins with or without bath. Altitude is 1,500 feet and the air is clear, dry and invigorating. Moderate rates which include saddle horses and daily guide service. Folders and rates on request. Through train service by Southern Pacific "Golden State Limited" to Mesa (23 miles), or will meet guests at Phoenix, 39 miles distant. Phil K. Lewis, manager, Mesa, Arizona (associated with Valley Ranch of Valley, Wyoming). *Season October to June.*



Chiricahua National Monument—"Wonderland of Rocks"

Seventy Six Ranch. Address, Seventy Six Ranch, Bonita, Arizona. Take Southern Pacific to Willcox or Safford where car from ranch will meet you.

Not especially a Guest Ranch or a Dude Ranch, but just Seventy Six Ranch where true western welcome and hospitality is extended to a limited number of guests. Located at the foot of 11,000-foot-high Mount Graham at an elevation of 5,000 feet. Locale of the book "Arizona" dramatized for stage and screen as "Old Arizona." Near "Cochise Stronghold" where Geronimo, famous Apache Chief, led his raiders.

Here one may enter wholeheartedly into the home life of the Old West. Participate in ranch activities. Hike over mountain trails. Ride to places of beauty and interest far and near. Rates \$30 to \$40 per week, including use of saddle horse. *Open all year.*

Sierra Linda Ranch. C. B. Conrad, manager, Portal, Ariz., via Rodeo, New Mexico. Take Southern Pacific to Rodeo, New Mexico, or Douglas, Arizona. Trains are met at these points by arrangement. Located in Cave Creek Canyon, the Yosemite of Arizona. Altitude 5,000 feet. Delightful all-year climate. Big and small game hunting, usual ranch activities. Cattle ranch in connection. Rates \$35 per week and up. Monthly rates on application. School one mile from ranch. Accommodations modern and attractive, excellent cuisine. *Open all year.*

Spur Cross Ranch. Phil K. Lewis, owner, Cave Creek, Ariz. 33 miles north of Phoenix, altitude 2,500 feet, in huge bowl surrounded by high mountains with Cave Creek winding its way in front of the buildings. Many interesting points within easy riding distance—Tonto National Forest, Skull Mesa, Indian ruins, old mines. Use Southern Pacific to Phoenix where you will be met by car from ranch. Rates \$31.50 per week, \$120 per month, which includes use of saddle horse and equipment. *Season October 1 to June 1.*

Tanque Verde Ranch. Jas. P. Converse, manager, Tucson, Arizona. Take Southern Pacific to Tucson, where, by appointment, guests will be met. Ranch is located 20 miles east of Tucson on the edge of desert in foothills of Rincon Mountains, altitude 2,800 feet. Comfortable accommodations for 18 guests in original adobe buildings equipped with modern conveniences. Guests ride with cowboys in regular work; hiking, camping, hunting. Rates on application. *Season October 1 to June 1.*

The Wigwam, Litchfield Park, Arizona, (16 miles from Phoenix) a winter resort hotel and inn owned and operated by the Goodyear Tire Company of Akron, Ohio, under the management of Jack Stewart. Accommodations American plan in finest all-modern bungalows which may be rented single or en suite, each room having its own bath. Excellent cuisine and complete hotel service. The Wigwam is located among palms, flowers and broad lawns but the surrounding country is fascinating desert land. Most healthful climate in the southwest, dry, warm and sunny with an altitude of 1,100 feet. Life at the Wigwam is very informal, guests rest or exercise as much or as

little as they please. All amusements are offered including fine 9-hole all-year golf course, tennis, rodeos, swimming, riding, ping pong, desert picnics, bicycling, dancing, bridge and others. Wigwam has outstanding golf professional in Morgan Hampton, and also operates its own stables with 30 excellent horses.

Season from November 25 until May 1 with accommodations for 55 guests. No person with communicable disease is accepted. Rates \$7.50 to \$10 daily, American plan, with half rate for children who may enroll in splendid grade or high school at Litchfield Park without extra fee. Take Southern Pacific to Phoenix or Litchfield where Wigwam car meets guests if notified in advance. Wire or letter will bring comprehensive brochure and full information to those interested.

Triangle T Ranch is located in the beautiful Texas Canyon, 3 miles northeast of Dragoon station at an elevation of 4,500 feet. This is the heart of Southeast Arizona's great cattle range country where in ideal surroundings all the activities of ranch life may be enjoyed, such as round-ups, roping, branding, etc. Triangle T, formerly Triangle L, is the oldest dude ranch in Arizona and is noted for its excellent table, charming clientele and wonderful climate. Riding is the chief sport, but there are many other things to amuse the guest, such as hunting, tennis, trap shooting, croquet, etc. Guests coming to Triangle T should take Southern Pacific to Dragoon or Tucson where they will be met free of charge. Rates from \$35 per week. Open the year around. For further information address M. J. Tutt, Dragoon, Arizona.

Vah-Ki Inn, adjoining the Casa Grande National monument, Coolidge, Arizona. A modern inn of unique charm adjoining the Casa Grande National Monument, half way between Phoenix and Tucson. Comfortable rooms charmingly furnished with fire place and bath. Moderate rates. Take Southern Pacific to Coolidge where you will be met by automobile.

Y-Lightning Ranch. F. B. Moson, owner, Hereford, Ariz. Six miles from Hereford station on Southern Pacific. Consists of 25,000 acres, situated on gently sloping mesa of San Pedro Valley. Elevation 4,880 feet. Three miles away are heavily-wooded Huachuca Mountains.

Hunting trips can be arranged, and visits to Naco, and to Agua Prieta, just across border in Old Mexico, with their attendant Bohemian atmosphere.

Essentially a cattle ranch; is in no sense a hotel, but guests will find every comfort commensurate with life on a modern high-class ranch. Among the outdoor sports are horseback riding, mountain climbing, tennis, hunting, and picnics in canyons of the Huachuca Mountains. Pack trips and camping trips can be arranged.

Guests occupy single and double cabins, comfortably furnished, with gas lights, heating stoves and running water; modern bathing facilities and hot water at all hours. Rates \$35 a week and up. Use of horse extra. *Open all year.*

New Mexico Guest Ranches

Double S Ranch. J. W. Sharp and B. H. Wilbur, managers, Cliff, New Mexico. Take Southern Pacific to Deming where guests will be met by ranch car, or take stage Deming to Silver City and be met there. Ranch located at base of Mogollon Mountains, altitude 5,300 feet. One hundred miles from Deming, 50 miles from Silver City. Comfortable accommodations for 20 guests in large adobe house and cabins. *Open all year.* Mountain camp, open May to October, located 26 miles from main ranch, in big timber country, altitude 8,200 feet. Good trout fishing, also bear, deer, turkey, and other game in season. Rates at the main ranch, \$25 weekly up to \$60 weekly; at the mountain camp, \$5 to \$7 daily. All rates include use of saddle horse. These rates guaranteed for 1934, subject to change in 1935.

Ladder Ranch. Take Southern Pacific to El Paso or Deming, New Mexico, where ranch auto will meet guests by advance arrangement.

This is a real ranch where the guests may take part in the everyday activities of western ranching, where life goes on in the fashion of 50 years ago. They say: "If you're looking for people, for gayety, for parties—Ladder Ranch is not the place for you, for we can't raise cattle in the midst of an artificial civilization. But if you're a little fed up with cities and really want to get away to a place where a man is taken for the man he is and not for the clothes he wears, then here's your place."

Located in the heart of the Black Range, 15 miles from Hillsboro, altitude ranging from 5,000 to 7,000 feet. Fine hunting in season—wolf, bear, fox, wild turkey, mountain lion, deer and quail abound. Fishing, swimming and boating on Elephant Butte Lake, 40 miles from ranch.

Wonderful food—home-cured meats, home-canned fruits and vegetables, eggs, fresh milk and cream produced on ranch.

Comfortable accommodations in airy rooms, electric lights, hot and cold water. *Open all year.*

Address Ladder Ranch, Hillsboro, New Mexico, for reservations and details.



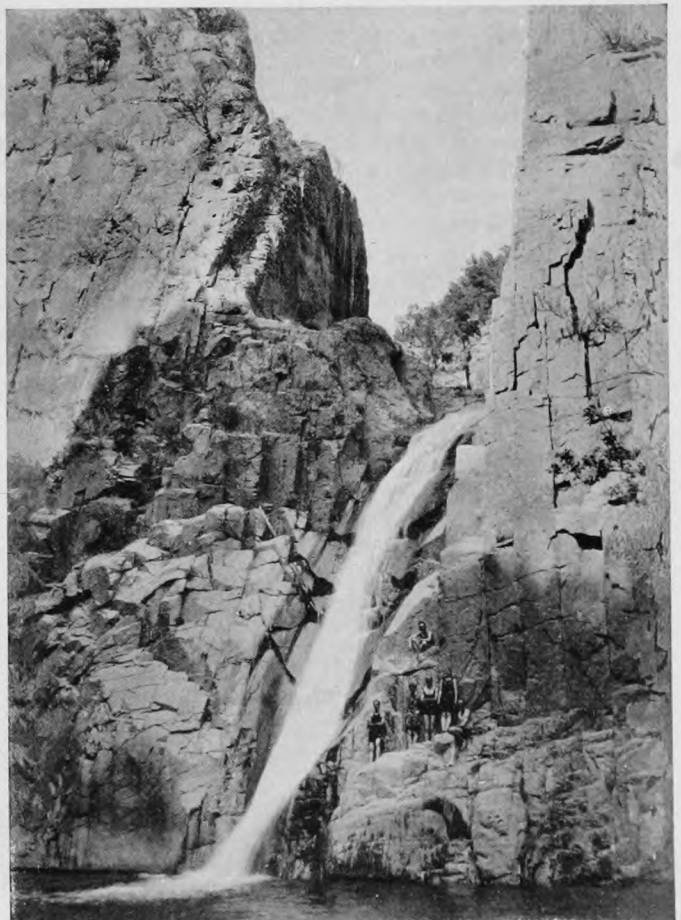
Cheerful living rooms furnished in western style

Lone Pine Ranch, Glencoe, N. M., S. W. Land, owner. Take Southern Pacific to Alamogordo, thence stage to ranch. Located in Ruidoso Valley of Lincoln National Forest at elevation of 5,800 feet. Excellent hunting and fishing. Rates \$15 per week.

Bonnell Ranch, Glencoe, N. M., B. J. Bonnell, owner. Reached by Southern Pacific to Alamogordo, thence stage to ranch. Rates \$15 per week, \$50 per month. Saddle horses to rent. Open all the year, but main season is Summer.

C X Ranch, Elk, N. M., 35 miles east of Southern Pacific station of Cloudcroft, N. M. Original type of cattle ranch on the old range of Billy the Kid. Short distance from Mescalero Indian reservation or Carlsbad Caverns. Riding, hiking, swimming, fishing, etc. Altitude 6,500 feet. *Open all year.*

T V Bar Ranch, 86 miles northwest from Deming, N. M., on Southern Pacific. Located at foot of Mogollon Mountains at altitude of about 5,000 feet, only one mile from Gila river. Fishing from May 1st to November 1st. Pack trips to trout streams. Also hunting and fishing. *Open all year.* Mail address, Gila, N. M.



A guest ranch swimming pool, New Mexico

California Guest Ranches

Deep Well Guest Ranch. Located 2 miles south of Palm Springs, California, and 13 miles south of Palm Springs station on Southern Pacific, where ranch car meets any train by advance arrangement.

An oasis surrounded by trees—low, rambling buildings of Spanish architecture—hospitable, informal buildings in detached groups. One mile west San Jacinto range rises over 10,000 feet high with snow-capped summit throughout the winter.

Horseback riding, hiking, tennis, archery, trapshooting, golf and swimming. Hiking and pack trips through canyons and mountains with competent cowboy guides. Accommodations to suit every one. Special educational and amusement facilities for children. *Season October to May.*

For reservations or other information write or wire Deep Well Guest Ranch, Palm Springs, California.

Pierson Dude Ranch. George Weston Pierson, managing owner, Delpiedra, California. Take Southern Pacific to Fresno, California, where private ranch car will meet guests by appointment. California's original Dude Ranch, a cattle and horse ranch of 50 years standing, is located in the picturesque Wonder Valley in Fresno County, surrounded by mountains on all sides, away from the beaten track, protected against undue incursions by the privacy of the road that leads to it. Ranch is within easy reach of General Grant National Park, Kings River Canyon, Sequoia National Park, Huntington Lake, Mariposa Big Trees, Yosemite National Park. Special arrangements can be made to visit these places while a guest at the ranch.

While horseback riding is the principal outdoor diversion, the visitor can also go swimming in the ranch pool in the Kings River; canoeing, hiking, rifle and pistol range, archery, fishing and hunting. Saddle trips of one day's travel to points of interest. Accommodations for guests can be had in the big ranch house, which has modern conveniences. Also in modern rustic cabins with running water and tub bath. Rates from \$6 per day and \$38.50 per week up. Rates include the use of saddle horses. *Open all year.*

San Clemente Ranch. Located at the headwaters of the Carmel River 20 miles from Hotel Del Monte and Monterey, Calif. Good hunting and fishing. Ranch trails connect with government ranger trails through the national forest and pack trips are arranged through the game country. Accommodations in cottages and cabins. Rates \$5 per day and up, horses and other equipment extra; weekly, \$35 and up, including horses and equipment. Reservations open only to guests of Hotel Del Monte and Del Monte Lodge. Reservations can be made through Hotel Del Monte or Del Monte Lodge.

Smoke Tree Ranch. Address, Smoke Tree Ranch, Palm Springs, California. Located in a forest of smoke trees on the alluvial plain of Palm Canyon one mile from the base of 10,800-foot-high San Jacinto mountains, two and one-half miles south-east of Palm Springs village and 14 miles from Palm Springs station on Southern Pacific. Ranch car meets guests at station by advance arrangements.

Strictly a desert Dude Ranch with specially trained ranch operatives. Guest accommodations in detached buildings ranging from single room cottage to buildings of three bedrooms with baths and living room. Rates from \$30 per week up. Horses \$12.50 per week. *Season October 15 to May 15.*

RESORT HOTELS—INDIO AND PALM SPRINGS

Location and Name	Rate Plan	Single Room, With Bath	RATES		
			One Person Without Bath	Double Room, With Bath	Two Persons Without Bath
INDIO					
Indio	E D	\$2.50	\$1.50	\$4.00 & \$5.00	\$2.50
	E W	\$15.00	\$9.00	\$24.00 & \$30.00	\$15.00
La Quinta	A D	\$10.00 to \$18.00		\$18.00 to \$30.00	
	A W	\$63.00 to \$115		\$112 to \$205	
PALM SPRINGS					
Central Hotel.....	E D	\$4.00	\$1.50 to \$3.00	\$5.00 & \$6.00	\$2.00 to \$5.00
	E W	\$25.00	\$9.00 to \$18.00	\$30.00 & \$32.50	\$12.00 to \$30.00
Deep Well Ranch			Information on	Information on	
Del Tahquitz.....			Information on	Information on	
Desert Inn.....	A D	\$10.00 to \$20.00		\$18.00 to \$28.00	
El Mirador.....	A D	\$9.00 to \$14.00		\$18.00 to \$26.00	
Oasis.....	A D	\$8.00 & up		\$16.00 & up	
	A W	\$56.00 & up		\$112.00 & up	
Palm Springs.....	A D	\$8.00	\$6.50	\$14.00 & \$15.00	\$12.00
Smoke Tree Ranch	A W	\$49.00	\$35.00	\$84.00	
Village Inn.....	E D	\$2.50 to \$3.00		\$3.50 to \$7.00	
	E W	\$15.00 to \$18.00		\$21.00 to \$42.00	

A—American plan. E—European plan. D—Daily. W—Weekly.



Mountains around Pierson's Dude Ranch



Palm Springs Guest Ranch scene

Nevada Guest Ranches

TH Ranch. Address, Neill West, TH Ranch, Sutcliffe, Nevada. Take Southern Pacific to Reno, Nevada, where guests will be met and transported to ranch 38 miles distant near beautiful Pyramid Lake; or if schedule is convenient take Southern Pacific direct to Sutcliffe, Nevada, where they will be met.

The ranch covers an extensive area ranging in elevation from 4,000 feet at the ranch headquarters to 9,000 feet on the mountain peaks. Fishing in season in Pyramid Lake where some of the finest trout are caught. Ranch adjoins Piute Indian Reservation and one can observe daily life of real Indians. Riding, hiking, fishing and swimming make up the daily routine. Rates \$6 a day, \$40 a week and up. *Open year round.*

Pyramid Lake Ranch. Address John Albert Marshall II, Pyramid Lake Ranch, Sutcliffe, Nevada. Take Southern Pacific to Reno, where guests are met by appointment or take Southern Pacific to ranch station, Sutcliffe, Nevada.

The Pyramid Lake Ranch at 3,783 feet elevation is located in the heart of the Piute Indian Reservation, on the largest fresh water lake in the United States outside of the Great Lakes and is the only guest ranch near or on the lake.

Outdoor activities include safe swimming in temperate water from a 15-mile sandy beach, riding down the beach through the sage or in the mountains, fishing for the world's largest trout, boating, hunting, pack trips, exploring.

Reno, "The Biggest Little City in the World," is but an hour distant by motor when one craves a taste of city life. Rates \$5.75 per day, \$40 per week and up including meals and saddle horses. *Open all year.*

Lone Star Guest Ranch House. J. L. Hash, owner, Lone Star Ranch, Box 93, Route 1, Reno, Nevada. Take Southern Pacific to Reno where ranch auto will meet guests and take them to ranch 3 miles distant.

An important factor in choosing this guest ranch is its close-ness to the well known modern little city of Reno. Yet at the guest house, with its wide verandahs, grassy lawns, and hammocks in the shade of old cottonwoods, one may enjoy the simple life not too far from the modern world. Horseback trails through many beautiful canyons. Kitchen is supplied with eggs, milk and vegetables in season from farming division of ranch. Excellent home cooking supervised by Mrs. Hash.

Accommodations are limited; rates \$60 to \$80 per month. *Open all year.*

Monte Cristo Ranch. Address, Blundell Bros., managers, P. O. Box 1549, Reno, Nevada. Take Southern Pacific to Reno, where ranch car will meet and transport guests to ranch 35 miles northeast, overlooking beautiful Pyramid Lake. A comfortable place to rough-it at a real western cow ranch. Instruction in riding if necessary. Rate \$7 a day. Reductions for two or more in one cabin. Rates include board, swimming, private cabin and personal saddle horse.

The Nevada guest ranches are within easy access of Lake Tahoe famous Sierra playground. There are numerous resorts of every description along the shores of Lake Tahoe which is only a few hours' ride from Reno, and is situated between the boundaries of Nevada and California in the crest of the high Sierra Nevada mountains surrounded by lofty mountain peaks, towering pines, firs and cedars.

There are accommodations of every class to be had at Lake Tahoe, sports to suit the most varied tastes. Here one can rest under the tall trees on the lake's shores or take part in the many sports such as swimming, playing on the sandy beaches, golf, tennis, boating, fishing, horseback riding, hiking, dancing, etc.



You'll find good fishing at Pyramid Lake



Guest Ranch at Pyramid Lake

Texas Guest Ranches

Gallagher Ranch. Gallagher Ranch, located 30 miles northwest of San Antonio, Texas, at altitude of 2,000 feet, consists of 10,000 acres of hill country, a grant from the Spanish Government to Peter Gallagher over 100 years ago. Two of the buildings at ranch headquarters are over 100 years old, and the numerous loop-holes and musket-slots are a vivid reminder of the old days when one's home had to be a fortress.

Sixty miles of trails lead over hills heavily wooded with live oak, cedar, Spanish oak and other evergreens, up and down San Jeronimo creek, across meadows and through pecan groves. From these trails it is not unusual to see deer or hear the gobbling of wild turkeys.

There is always something doing at the ranch . . . swift rides at dawn to view the sunrise, moonlight canters, usual ranch activities, picnics and barbecues, swimming, archery, rifle practice, etc. Fishing in the ranch streams and in Medina Lake, 12 miles distant. In the evening—dancing, cards, pingpong, and music including the cowboy ballads and melodies of Old Mexico.

Many trips to points of interest including San Antonio, Fort Sam Houston, and Randolph Field, "West Point of the Air."

Take Southern Pacific to San Antonio where guests are met by appointment. *Season November 1 to June 1.* Rates \$35 to \$80 per week, including horse and guides. \$10 per week less before January 15 and after April 15. Address, Gallagher Ranch, P. O. Box 1138, San Antonio, Texas.

Haley Ranch. Address, Haley Ranch, Alpine, Texas. Take Southern Pacific to Alpine where you will be met by appointment.

Ranch is located in a valley high up in the Davis Mountains at elevation of 5,100 feet, 15 miles south of Alpine. Established over 50 years ago and cattle and sheep raising is still main business. Guests may ride with the cowboys or make short trail trips or pack trips into the mountains. Hunting in season. Mountain climbing, short hikes, dancing and many other amusements.

Guests are housed in commodious quarters; living room 28 by 80 feet. Bedrooms arranged around large patio. Limited accommodations. Rates \$35 per week including use of horse. Special rates for children. Regular season June 15 to September 15, but accommodations are available all year.

Mitre Peak Park Ranch. A. J. Tippit, proprietor, Mitre Peak Park, Texas. Take Southern Pacific to Alpine, Texas, where you will be met by appointment and motored to ranch 13 miles north in Davis Mountains. Summer cottages for house-keeping, electric lights, shower baths, cafeteria, swimming pool, mountain spring water. Horseback riding, hiking. *Open all year.*



Main Building at Gallagher Ranch



Ready for the morning gallop at Haley's Ranch.



A natural swimming hole near Mitre Peak Park.

Southern Pacific Service to the West

SOUTHERN PACIFIC'S Golden State and Sunset Routes give direct main line service to most of the guest ranches along Southern Pacific Lines. Golden State Route, for example, the direct route between Chicago, Kansas City or St. Louis and Los Angeles or San Diego, runs via El Paso, Texas, and then through Southern New Mexico and Arizona, providing the fastest service to Southern

Arizona, center of guest ranch activities. The Golden State Limited is one of the country's famous trains.

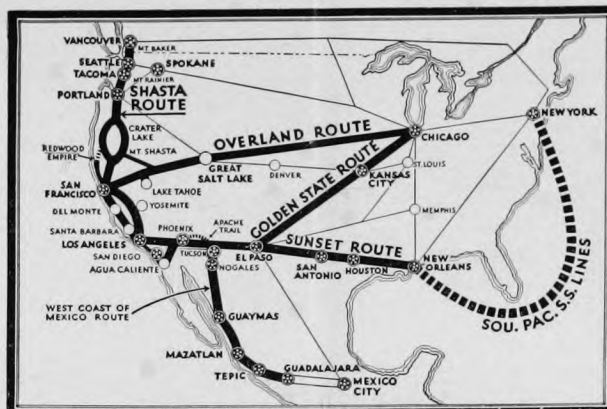
Sunset Route of Southern Pacific, runs from New Orleans through the Old South and Texas to El Paso and then through New Mexico and Southern Arizona to San Diego, Los Angeles and San Francisco. This is the route of the Sunset Limited.

The Most Direct Way

These through trains run directly to Phoenix, Chandler, Tucson, Douglas, Yuma and other Southern Arizona cities—saving many hours, with no change of cars en route.

In visiting these western guest ranches, combine Sunset or Golden State Routes with Shasta or Overland Routes, Southern Pacific's two other transcontinental routes, to provide a round trip that shows you twice as much of the West.

When you choose to *go one way, return another* by Southern Pacific's Four Great Routes you see more of the Pacific Coast and more of the United States than on any other railroad. Each route is crowded with travel attractions, but each has its own characteristics, each different from the other. The charm of the Old South, and Old World New Orleans on the Sunset Route is in direct contrast to the virile and rugged territory you see when you go through the Pacific Northwest and northern United States or Canada. The colorful Southwest with its Spanish atmosphere, along the border, is entirely different from the High Sierra country and the rolling plains of the Overland Route. Yet each has its peculiar charm and the wise traveler arranges his routing so as to get the most for his money, seeing as much as he can with as much variety as possible. He avoids monotony. This variety is gained in most cases without sacrifice of time. At most, there will be but a few hours difference and



they will be hours gained, not wasted. Southern Pacific's four great routes for trans-continental travel are shown on the little map. Over each of these routes we operate a premier train and other fine trains daily. The premier trains—Sunset Limited, Overland Limited, Golden State Limited and Cascade—offer every modern refinement of service including air-conditioned observation, lounge, club,

dining and room cars. Air-conditioned cars manufacture their own climate winter and summer. The air is always clean and fresh. There are no drafts, no stuffiness and noise is deadened. There is no charge for air-conditioned accommodations except the usual rail and Pullman fares. There is no extra fare on any Southern Pacific train. In all trains the same spirit of Southern Pacific is found—a friendly interest in administering to the comfort and pleasure of the traveler.

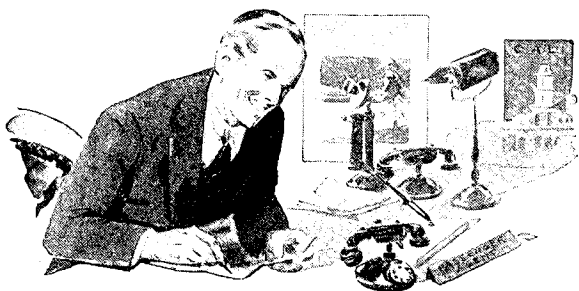
Delicious Low Cost Meals

Eating in a dining car, while the train rushes on, is fun. And if the food is good, your enjoyment becomes perfect.

We are sure you will be delighted with our dining car service. "Meals Select," we call it. Complete luncheons and dinners begin at 80c including soup, salad, entree, vegetables, bread and butter, beverage and dessert. Club breakfasts begin at 50c. A la carte service is also provided. These new meals are served in the traditional Southern Pacific manner. Only the price is changed. We have always served and will continue to serve only the finest foods obtainable.

Oil is used for fuel by all Southern Pacific passenger locomotives so that passengers are not bothered by smoke or cinders. And important, too, in one's comfort is the road-bed. Southern Pacific, long proud of its road-bed, uses rock ballast which makes for dustless, smooth riding travel.

There is a Southern Pacific representative practically in every city and town reached by its lines, also in important cities in the middle west and east, who will gladly help you plan your trip so you will get the most out of the time at your disposal and for the money you wish to spend. Phone or write him and he will take care of all your travel details.



Let the Southern Pacific Agent help you plan your trip

Your nearest Southern Pacific representative will gladly give you full information as to passenger fares, Pullman reservations, time schedules, etc. He will also attend to such details as tickets, hotel and Pullman reservations, etc., for you, or help you with your freight shipments.

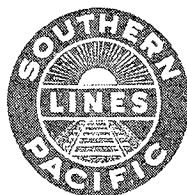
Southern Pacific representatives in important cities in the Middle West and East are shown below and in addition Southern Pacific agents are located in practically every city and town reached by its lines. Southern Pacific representatives are at your service during your journey.

Southern Pacific Representatives

ATLANTA, GA.....	815 Volunteer Bldg.....	D. Asbury, <i>General Agent</i>
BALTIMORE, MD.....	214 Baltimore Life Bldg.....	W. B. Johnson, <i>General Agent</i>
BIRMINGHAM, ALA.....	203-8 Empire Bldg.....	S. J. Brown, <i>General Agent</i>
BOSTON, MASS.....	294 Washington St., Rm. 209.....	E. S. Leavitt, <i>General Agent</i>
BUFFALO, N. Y.....	204 Ellicott Square Bldg.....	G. H. Vogel, <i>General Agent</i>
CHICAGO, ILL.....	77 E. Jackson Blvd.....	J. H. Desherow, <i>Gen. Agt., Pass'r Dept.</i>
CINCINNATI, OHIO.....	408 Traction Bldg.....	Robt. McDowell, <i>General Agent</i>
CLEVELAND, OHIO.....	1116 Hippodrome Bldg.....	E. G. Cook, <i>General Agent</i>
DENVER, COLO.....	409 U. S. Nat. Bank Bldg.....	E. H. Williams, <i>General Agent</i>
DETROIT, MICH.....	205-7 Majestic Bldg.....	L. H. Trimble, <i>General Agent</i>
INDIANAPOLIS, IND.....	309 Merchants Bank Bldg.....	T. B. Brennan, <i>General Agent</i>
KANSAS CITY, MO.....	501 Railway Exchange Bldg.....	J. G. Lowe, <i>General Agent</i>
LOUISVILLE, KY.....	296 Starks Bldg.....	Paul E. Carneck, <i>Dist. Frt. and Pass'r Agt.</i>
MEMPHIS, TENN.....	716 Exchange Bldg.....	C. A. Bevis, <i>General Agent</i>
MEXICO CITY, MEX.....	Avenida Cinco de Mayo, No. 32.....	F. V. Stark, <i>Traffic Mgr.</i>
MINNEAPOLIS, MINN.....	619 Metropolitan Life Bldg.....	R. K. Smith, <i>General Agent</i>
MONTERREY, MEX.....	Langstroth Bldg.....	Alfonso Marquez, <i>Gen. Agt. for Nor. Mexico</i>
NEW YORK, N. Y.....	535 5th Ave. (at 44th), Room 1012	F. L. Pickering, <i>General Agent</i>
		John N. Field, <i>District Passenger Agent</i>
	531 Fifth Ave. (at 44th St.)—	Southern Pacific Ticket Office
		W. J. Hanrahan, <i>City Passenger and Ticket Agent</i>
OKLAHOMA CY., OKLA.....	924 Perrine Bldg.....	J. A. Eads, <i>General Agent</i>
PHILADELPHIA, PA.....	600 Packard Bldg.....	F. T. Brooks, <i>General Agent</i>
PITTSBURGH, PA.....	1215 Gulf Bldg.....	H. F. Starke, <i>General Agent</i>
SALT LAKE CITY, UTAH.....	41 South Main St.....	D. R. Owen, <i>General Agent</i>
SEATTLE, WASH.....	1405 Fourth Ave.....	B. C. Taylor, <i>General Agent</i>
ST. LOUIS, MO.....	445 Cotton Belt Bldg.....	L. B. Banks, <i>General Agent</i>
VANCOUVER, B. C.....	474 Granville St.....	C. G. Alton, <i>Can. Pass'r and Ticket Agt.</i>
WASHINGTON, D. C.....	1201 Shoreham Bldg.....	A. A. Price, <i>General Agent</i>
J. R. ORMANDY, <i>General Passenger Agent</i> , Portland, Ore.		
F. C. LATHROP, <i>General Passenger Agent</i> , San Francisco, Cal.		
H. P. MONAHAN, <i>General Passenger Agent</i> , Los Angeles, Cal.		
J. D. MASON, <i>General Passenger Agent</i> , El Paso, Texas		
J. H. MCCLURE, <i>General Freight and Passenger Agent</i> , Phoenix, Ariz.		
J. T. MONROE, <i>Passenger Traffic Mgr.</i> , Texas and Louisiana Lines, Houston, Texas.		
W. C. McCORMICK, <i>General Passenger Agent</i> , New Orleans, La.		
H. H. GRAY, <i>General Passenger Agent</i> , New York, N. Y.		
O. P. BARTLETT, <i>Passenger Traffic Manager</i> , Chicago, Ill.		
WILLIAM SIMMONS, <i>Traffic Mgr.</i> , Southern Pacific Steamship Lines, New York, N. Y.		
L. G. HOFF, <i>Traffic Manager</i> , Mexican Lines, Guadalajara, Mex.		

C. S. FAY, *Vice President and Traffic Mgr.*, Texas and Louisiana Lines, Houston, Texas.

F. S. MCGINNIS, *Vice President*, System Passenger Traffic, San Francisco, Cal., and Houston, Texas.



GUEST RANCHES

ALONG SOUTHERN PACIFIC LINES

Listed on these pages are the guest ranches in Texas, New Mexico, Arizona, California, Nevada and Old Mexico served direct or conveniently reached by Southern Pacific lines.

Nearly every guest ranch issues a booklet or folder, usually well illustrated, which gives complete information as to its facilities, and a description of its scenic and other attractions. It is our recommendation that you send for this literature to the ranches in which you are interested. There is no obligation, and with the booklets in your hands the matter of making a satisfactory selection will be greatly facilitated.

The ranches invite correspondence and will be glad to answer any inquiries you desire to make. Reservations should be made direct with the ranch, and should always be made in advance, as accommodations may not always be available at the height of the season.

The data on these pages has been carefully compiled from current information furnished us direct by the ranches, and while Southern Pacific assumes no responsibility for its accuracy, we believe it to be a correct representation of facts regarding the ranches enumerated at the date of issue.

Southern Pacific

ARIZONA GUEST RANCHES

BAR F X RANCH. V. L. McDonald, manager. Mail and telegraph address, Wickenburg, Arizona. Season, September 15 to June 1. 20 guests. Rooms have steam heat and stove, private bath, electricity. Rates \$45 per week and up, American plan, includes horses and all ranch activities. Special monthly and family rates. Take Southern Pacific to Phoenix, Arizona, where visitors are met by ranch car. Distance to ranch, 54 miles. Horseback riding, putting green, target range, tennis, badminton, horseshoe and croquet courts, practice polo.

BAR O RANCH. Harry C. Kendall, owner. Mail and telegraph address, Tombstone, Arizona. Season, January 1 to April 31. 15 guests. Accommodations from plain cabins to those with all modern conveniences. Rates from \$40 to \$50 per week, American plan, including saddle horses. Pack trips extra. Take Southern Pacific to Fairbank, Arizona, where visitors are met by ranch car. Distance, Fairbank to ranch, 21 miles; transportation \$5 per person. A genuine cattle ranch of over fifty years' activity, affording an opportunity for real cowboy adventure.

BAR 37 RANCH. Ned Andrews, proprietor. Mail address, Camp Wood, Arizona. Telegraph address, Prescott, Arizona. Season April 1 to November 15. 12 guests. Individual log cabins. Rates, \$45 to \$50 per week, American plan, including saddle horses. Pack trips extra. Located 50 miles northwest of Prescott, Arizona.

BELLA VISTA RANCH. Mr. and Mrs. Charles R. Conrad, owners. Address, Route 4, Box 567, Grant Road, Tucson, Arizona. 15 to 20 guests. Rates, \$45 and up per week, \$150 and up per month. Horses, \$30 per month extra, including guide when required. Take Southern Pacific to Tucson, Arizona.

BISHOP'S GUEST RANCH. Mail and telegraph address, Tempe, Arizona. Open the year 'round. 10 guests. Accommodations in main building and cottages—modern, comfortable. Rates, single, \$25 per week, \$90 per month. Saddle horse, \$15 per month. Take Southern Pacific to Tempe, Arizona, where ranch car meets guests. Distance to ranch, 2 miles. Horseback riding, croquet, desert picnics, motor trips. Golf course near by.

BORDER RANCH. Rudy Becker, manager. Mail and telegraph address, Hereford, Arizona. 20 guests. Summer season, May 15 to September 15. Winter season, September 15 to May 15. Accommodations in main guest house or private cabins. Hot and cold water, electricity and bath or shower. Rates, summer, \$70 a week, single, \$50 a week and up, double; winter, \$80 a week, single, \$60 a week and up, double. Rates include saddle horses and all activities of ranch including transportation from and to the railroad station. Take Southern Pacific to Hereford, Arizona. Distance of ranch from station, 15 miles. All guests met. A real cattle ranch near the Mexican border. Elevation, 5300 feet.

CARR CANYON RANCH. Capt. J. H. Healy, manager. Mail and telegraph address, Hereford, Arizona. Open all year. 12 guests. Single or double rooms with bath; all modern accommodations. Rate, \$35 per week, includes saddle horse, guide and pack trips. Take Southern Pacific to Hereford, Arizona. Station to ranch, 12 miles. Riding, small and big game hunting.

CASA HERMOSA GUEST RANCH. Lon Megargee, general manager. Mail address, Box 645, Phoenix, Arizona. Telegraph address, Phoenix. Season October 1 to May 1. Bath or shower in every room. Guest house apart from main structure. Steam heat, fireplaces. Rates, \$50 per week and up, include everything except horses. Located ten miles from Phoenix. Take Southern Pacific to Phoenix, Arizona, where you will be met by appointment.

CIRCLE "Z" RANCH. Mr. and Mrs. L. G. Zinsmeister, owners and managers. Mail address, Patagonia, Arizona. Telegraph address, Circle "Z" Ranch, Arizona. 60 guests. Modern rooms with private or connecting bath. Winter season, October 1 to May 15. Summer season, July and August. Rates, \$45 to \$70 per week, American plan, including horses and daily guide with group. Extra charge for private guide. Take Southern Pacific to Fairbank from the East; to Nogales from the West. Ranch car meets guests. Fairbank to ranch, 50 miles; Nogales to ranch, 15 miles. Mountain cabin 20 miles from ranch; small extra charge for trips. Horseback riding, swimming, tennis, quoits, target shooting, croquet.

CROSS ANCHOR RANCH. W. P. Sinnett, Jr., owner. Mail address, P. O. Box 2230, Tucson, Arizona. Open all year. 15 guests. Accommodations in main building and guest houses. Rates, \$30 to \$50 per week, including saddle horses. Every room has either shower or tub. Take Southern Pacific to Tucson, Arizona. Riding, swimming, tennis, deck tennis, badminton. Fishing and hunting trips to the Gulf of California by arrangement.

DIAMOND W RANCH. Julia A. Bennett, manager. Mail address, Route 2, Box 464, Tucson, Arizona. Telegraph address, Tucson, Arizona. Season, November 1 to May 15. 25 guests. Private cottages and rooms in main ranch house. Rates, \$50 to \$75 per week per person, including everything the ranch has to offer. Take Southern Pacific to Tucson, Arizona. Ranch car meets guests. Tucson to ranch, 12 miles. Altitude, 2600 feet. Horseback riding, tennis, ping-pong, target shooting, croquet, picnics, motor trips, sun-bathing.

EL RANCHO DEL SOL. Mr. and Mrs. E. G. Bofferding, managers. Mail and telegraph address, Wickenburg, Arizona. Season, October 15 to May 15. 16 guests. Rooms in main ranch house, with private bath or shower. Rates, \$45 to \$60 per week, per person, including horses and guides. Pack trips extra. Take Southern Pacific to Phoenix, Arizona, where ranch car meets guests. Phoenix to ranch, 56 miles, no charge. Hunting, riding, wild horse chasing, polo, tennis, croquet, roping, trips to Indian ruins.

EL RANCHO GRANDE. George R. Gillespie, manager. Mail address, Box 397, Mesa, Arizona. Telegraph address, Mesa, Ariz. Season, October 1 to May 15. Each room has private bath, electric heat. Rooms have fireplaces. Rates on application. Located in foothills 30 miles from Phoenix. Guests met by appointment at either Mesa or Phoenix, Arizona, on Southern Pacific. Horseback riding, fishing, hunting, hiking, boating, golf, tennis, trap shooting, archery.

EL RANCHO ROBLES. Mail address, Oracle, Arizona. Telegraph address, Tucson or Oracle, Arizona. Walter E. Jahn, manager. Season, October 1 to June 1. 30 guests. Single and double rooms with bath; also a few living room suites; separate cottages. Rates, \$70 to \$80 per person per week. Rates include saddle horses and everything except personal laundry. Pack trips extra. Take Southern Pacific to Tucson, Arizona. Ranch car meets guests, no charge. Tucson to ranch, 36 miles. Riding, picnics, barbecues, auto trips, badminton, shooting, hunting, pack trips, dances.

FARAWAY RANCH. E. M. Riggs, owner. Mail address, Willcox, Arizona. Telegraph address, Douglas, Arizona. Open the year 'round. 20 guests. Accommodations in main house and cabins; hot and cold running water. Rates, \$25 to \$35 per person per week, American plan. Horses, \$3.75 to \$5 per day, \$7.50 per week. Take Southern Pacific to Willcox or Douglas, Arizona. Transportation Willcox to ranch, \$2.50 for one, \$3 for two; Douglas to ranch, \$5 for one, \$7.50 for two. Trunks from Willcox,

\$2; from Douglas, \$4; hand luggage free. Willcox to ranch, 36 miles. Douglas to ranch, 68 miles. Horseback riding, hunting, swimming. The ranch is directly adjacent to the Wonderland of Rocks, Chiricahua National Monument.

FLYING V RANCH. Lynn S. Gillham, manager. Mail address, P. O. Box 1991, Tucson, Arizona. Telegraph address, Tucson, Arizona. Season, October 1 to May 1. 34 guests. Cottages, electric light, hot water, private and connecting baths. Rates, \$5.50 to \$8.50 per day, American plan. Saddle horses, \$15 per week, \$50 per month. Pack trips, \$7.50 per day. Take Southern Pacific to Tucson, Arizona. Ranch car meets guests, no charge. Tucson to ranch, 16 miles. Trail and flat riding, polo and rodeo field, goat roping, tennis, dancing, picnics, pack trips, auto trips, cattle activities, billiards, pool.

HACIENDA DE LA OSA. Mail address, Box 1631, Tucson, Arizona. Telegraph address, 20 East Broadway, Tucson, Arizona. Open the year 'round. Rates, \$35 to \$50 per week, including saddle horses. Located 65 miles south of Tucson on Mexican border. Take Southern Pacific to Tucson, Arizona, where you will be met by prearrangement. Good game hunting and fishing accessible.

HACIENDA LOS ENCINOS. Mr. and Mrs. E. N. Carr, proprietors. Mail and telegraph address, Sonoita, Arizona. Open the year 'round. 16 guests. Rates, \$35 to \$65 per week, per person, including riding horses. Lower rates for long stays. Private or connecting baths, steam heat, electric light. Take Southern Pacific to Fairbank, Arizona, where guests will be met. Distance to ranch, 30 miles. Riding, hiking, swimming, hunting, tennis, croquet, badminton, picnics, skeet shooting. Elevation, 4,800 feet.

HAYDEN GUEST RANCH. Mail and telegraph address, Tempe, Arizona. Accommodations in main ranch house and cottages. Cottages have living room, two bedrooms and sunporch. All accommodations have fireplace, furnace heat, electricity, hot and cold water, tub and shower baths. Rates, \$35 to \$70 per week. Special rates by the month or season. Take Southern Pacific to Tempe, Arizona. Golf, hunting, fishing, riding.

H W RANCH. Sydney T. Fritsche, manager. Mail address, Chino Valley, Arizona. Telegraph address, Prescott, Arizona. Open continuously. 5 guests, accommodated in cabins and rooms in ranch house. Rate \$25 per week, including horse. Located northwest of Prescott, at an altitude of 4,500 feet. Good saddle horses. Riding, hunting, fishing, swimming.

JAY SIX CATTLE RANCH. J. G. F. Speiden, manager. Mail and telegraph address, Benson, Arizona. Open all year. 8 guests. Single and double adobe huts, each with bathroom, fireplace, closets. Rate, \$75 per person, per week. Lower rates for extended stays. Horses, guides and pack trips included in rate. Riding, cattle activities, swimming, shooting and trapping in season, hiking, pack trips.

KAY-EL-BAR RANCH. Arthur M. Stewart, manager. Mail and telegraph address, Wickenburg, Arizona. Season, October 1 to April 30. 24 guests. Single and double rooms, each with shower, hot and cold water, furnace heat. Rates, \$65 per week single, \$55 each per week double. Four weeks or more, \$60 per week single, \$50 each per week double. Rates include horses and guides. Pack trips extra. Take Southern Pacific to Phoenix, Arizona, where ranch car meets you by appointment without charge. Phoenix to ranch, 53 miles. Tutoring for children may be had at a small charge.

LA SIESTA DEL MONTE. Mrs. Anna M. Roush, manager. Mail address, Portal, Arizona. Telegraph address, Rodeo, New Mexico, or Douglas, Arizona. Open all year. 8 guests. Rate, \$20 per week, American plan. Saddle horses, \$1 per day. Guides may be had and pack trips arranged at reasonable rates. Take Southern Pacific to Rodeo, New Mexico. Rodeo to ranch, 10 miles. Run mostly as a rest home, but provide horseback riding, hiking, motor trips, dancing and usual activities of a guest ranch.

LAZY R C RANCH. Leb. Chapman, manager. Mail and telegraph address, Wickenburg, Arizona. Season, October to June. 14 guests. Rates, \$35 to \$45 per week, American plan, including saddle horse. Take Southern Pacific to Phoenix, Arizona, where ranch car meets guests without charge, on arrangement. Riding and usual ranch activities. Located on open range. No pack trips.

LOS CERROS. H. A. Elliott, manager. Mail address, Oracle Star Route, Tucson, Arizona. Telegraph address, Tucson, Arizona. Season, October 1 to June 1. 25 guests. Accommodations modern, with electric light, running water in all rooms, connecting and adjoining baths, fireplace heat. Rates, \$40 to \$55 per week, including use of horse, guide and all facilities. Take Southern Pacific to Tucson, Arizona. Ranch car meets guests without charge. Hand baggage free, trunks \$1 each. Tucson to ranch, 20 miles. Riding, hiking, hunting, trapshooting, ping-pong, quoits, sun bathing.

MONTE VISTA RANCH. Lewis C. White, manager. Mail and telegraph address, Wickenburg, Arizona. Season, October 15 to May 15. 25 guests. Rates, \$55 to \$75 per week, American plan, including use of horses and guide. Rates for pack trips on application. Take Southern Pacific to Phoenix, Arizona, where ranch car meets guests without charge. Phoenix to ranch, 50 miles. A real cattle ranch. Riding, tennis, picnics, rodeos, hunting, trapshooting, pack trips.

OLD HOMESTEAD GUEST RANCH. Mrs. Augusta Weiler, manager. Route 5, Box 700, Phoenix, Arizona. Open all year. 6 guests. A modern ranch home in the center of a citrus orchard. Electric light, private baths, hot and cold water. Rate, \$25 per week, American plan, including use of horse. Take Southern Pacific to Phoenix, Arizona, where ranch car will meet you without charge. Phoenix to ranch, 4 miles.

PARADISE VALLEY GUEST RANCH. Prescott, Arizona. Clyde Roland, manager. Season, May 1 to December 1. 14 guests. Individual cottages. Rates, \$25 per week, \$90 per month, including use of horse. Three miles from Prescott in the pines. Riding, swimming, tennis, golf.

PIMA ESTATE GUEST RANCH. Celeste H. Rauch, hostess. Mail address, Laveen, Arizona, Route 1. Telegraph address, Phoenix, Arizona; 'phone 93367. Season, November 1 to May 31. 8 guests. All visitors housed in central building, equipped with furnace heat, electricity, private and adjoining baths. Rates, \$35 to \$45 per week, single; \$60 to \$80 per week, double, American plan. Saddle horse, \$10 per week. Take Southern Pacific to Phoenix, Arizona. Guests met by ranch car without charge, except for trunks. Phoenix to ranch, 14 miles.

QUARTER CIRCLE V BAR RANCH. Charles H. Orme, manager. Mail and telegraph address, Mayer, Arizona. Open all year. 15 guests. Accommodations in lodge and cottages. Rates, \$35 to \$55 per week, American plan, including horses. Pack trips extra. Take Southern Pacific to Phoenix, Arizona. Ranch car meets guests without charge. Phoenix to ranch, 90 miles. Hunting, fishing, swimming, boating, tennis, riding and participating in ranch activities.

RANCHO LINDA VISTA. George S. Wilson, manager. Mail and telegraph address, Oracle, Arizona. Season, October 1 to June 1. 50 guests. Accommodations in modern cottages, each with its own bath, hot and cold water. Rate \$50 per week, including saddle horse. Take Southern Pacific to Tucson, Arizona, where ranch car will meet you. Transportation to ranch (34 miles) \$. A regular cattle ranch. Elevation, 4500 feet. Horseback riding, swimming, tennis, hunting, trapping, pack trips, trap shooting, quaits.

RANCHO SOLEDAD. Mr. and Mrs. Sterbenz, owners. Address, Florence, Arizona. Rate, \$30 per week. Saddle horses \$3 per day. Accommodations in guest house. Individual bathrooms. Take Southern Pacific to Coolidge, Arizona, where you will be met by appointment.

REMUDA RANCH. Jack Burden, manager. Mail and telegraph address, Wickenburg, Arizona. Season, October 1 to May 1. 46 guests. Modern bungalows, with connecting or private baths. Rates, \$5 to \$10 per day, American plan. Saddle horse, \$15 per week, \$50 per month, \$40 per month for three months. Take Southern Pacific to Phoenix, Arizona, where ranch car will meet you without charge. Phoenix to ranch, 54 miles. Altitude, 2076 feet. Riding, cattle, rodeos, tennis, picnics, pack trips, rifle range, swimming and regular ranch activities. A school is maintained on the ranch, offering tutoring and established curriculum for boys and girls. Rate \$40 a month and up.

SAHUARO LAKE RANCH. Phil K. Lewis, manager. Mail and telegraph address, Mesa, Arizona. Season, October 1 to June 1. 50 guests. Accommodations in main building and detached cottages, all strictly modern. Rates, \$40 to \$60 per week, American plan. Saddle horses, \$10 per week. Take Southern Pacific to Mesa, Arizona, where visitors are met on appointment. Mesa to ranch, 23 miles. Boating, swimming, fishing, hunting in season, horseback riding, badminton, table tennis, croquet, chuck-wagon and campfire picnics. Complete rodeo arena with frequent impromptu rodeos. Fully accredited school for children.

SEVEN DASH RANCH. Mrs. Charles H. Banes, manager. Mail address, Dragoon, Arizona. Telegraph address, Willcox, Arizona. Season, October 1 to May 1. 20 guests. Sunny, comfortable rooms with private baths, open fireplaces, in 4 and 6-room cottages. Rates, \$50 and up per week, including saddle horse, guide, lodging and fare from station to ranch. Take Southern Pacific to Dragoon, Arizona. Dragoon to ranch, 12 miles. A regular cattle ranch. Riding, hiking, hunting in season and taking part in ranch activities.

SEVENTY-SIX RANCH. Mrs. W. T. Webb, manager. Mail address, Bonita, Arizona. Telegraph address, Willcox, Arizona. Open all year. 30 guests. Cabins with private bath and modern facilities. Rate, \$35 per week, includes everything the ranch has to offer. Take Southern Pacific to Willcox, Arizona, where ranch car meets you by arrangement. Willcox to ranch, 40 miles. Elevation, 5,000 feet. A real cattle ranch. Riding, swimming, hiking, pack trips and ranch activities.

SILVER BELL GUEST RANCH. Mr. and Mrs. Bud Mann, owners. Mail and telegraph address, Silver Bell Road, Tucson, Arizona. Guest rooms in two, three and four room buildings. Steam heat, electricity, private or connecting baths. Take Southern Pacific to Tucson, Arizona, where you will be met by appointment. Rates on application.

STAR KING RANCH. K. W. Klene, manager. Mail address, Fairbank or Elgin, Arizona. Telegraph address, Elgin, Arizona. Open all year. 8 guests. The guest house is a rambling structure, heated by stoves and fire-

places, equipped with bath and shower. Living is simple and informal. Rates from \$20 per week, \$75 per month, including saddle horse. Take Southern Pacific to Fairbank, Arizona, where ranch car meets you by arrangement. Fare to ranch \$1, distance 20 miles.

TANQUE VERDE RANCH. James P. Converse, manager. Mail address, P. O. Box 1831, Tucson, Arizona. Telegraph address, Tucson, Arizona. Season, October 15 to May 1. 20 guests. Comfortable accommodations in original adobe buildings equipped with modern conveniences. Rates on application. Take Southern Pacific to Tucson, Arizona, where ranch car meets you. Tucson to ranch, 18 miles. Guests ride with cowboys in regular work; hiking, camping, hunting.

TRIANGLE H C RANCH. Harry Knight, manager. Mail address, Harry Knight, Camp Wood, Arizona. Telegraph address, Harry Knight, Prescott, Arizona. Season, April 1 to December 1. Rates, \$40 per week in furnished room with detached bath in separate building. \$50 per week in private room with private bath. Rates include horse, outfit and guide. Take Southern Pacific to Phoenix, Arizona, where ranch car will meet you by pre-arrangement.

TRIANGLE T RANCH. Mr. and Mrs. J. A. McLeod, managers. Mail and telegraph address, Dragoon, Arizona. Season, October 1 to May 1. 30 guests. Accommodations in cottages with baths and electric light. Stoves in all bedrooms and bathrooms. Rates, \$50 to \$65 per week, including guide and saddle horse. Pack trips extra. Take Southern Pacific to Dragoon, Arizona, where ranch car meets you without charge. Station to ranch, 3 miles. Riding, hiking, tennis, ping-pong, hunting in season, cowboy dances, and many other ranch activities.

Y-LIGHTNING RANCH. Mr. and Mrs. F. B. Moson, managers. Mail and telegraph address, Hereford, Arizona. Open all year. 30 guests. Single and double cabins. Private or connecting shower and tub, hot and cold water, electric light, heating stoves. Rates, winter \$40 a week and up; summer, \$30 per week and up. Saddle horses, winter, \$7 per week; summer, \$5 per week. Take Southern Pacific to Hereford, Arizona, where ranch car meets you without charge. Horseback riding, mountain climbing, tennis, hunting, picnics and pack and camping trips.

CALIFORNIA GUEST RANCHES

B-BAR-H RANCH. Charles F. Bender, manager. Mail address, Garnet, California. Telegraph address, Garnet or Palm Springs, California. Season, October 15 to May 1. 60 guests. Rates, \$14 per day, single, and \$24 per day, double, including guides, pack trips and saddle horse. Take Southern Pacific to Palm Springs, California, where ranch car meets you without charge. Distance Palm Springs to ranch, 15 miles. Horseback riding, swimming, tennis, badminton, ping-pong, archery, skeet shooting, hiking.

DEEP WELL GUEST RANCH. Frank H. Bennett, manager. Mail and telegraph address, Palm Springs, California. Season, October 1 to June 1. 60 guests. Guests housed in bedrooms, suites, cottages. Rates \$9 to \$15 per day, single; \$15 to \$20 per day, double. All American plan. Saddle horses and guides extra. Take Southern Pacific to Palm Springs, Cal., where you will be met by appointment without charge. Distance, station to ranch, 12 miles. Horseback riding, paddle tennis, badminton, ping-pong, picnics, swimming pool.

DIAMOND D RANCH. Wallace E. Hiatt, manager. Mail and telegraph address, Willits, California. Open all year. 50 guests. Rooms with private bath in main ranch house. Cabins with central shower and toilets. Meals served in central dining room. Rates, \$40 to \$50 per week; \$150 to \$190 per month, saddle horse included. Private or special guides, \$5 per day. Take Northwestern Pacific Railroad to Willits, California, where ranch car meets you, no charge. Willits to ranch, 2 miles. Largest cattle ranch in northern California with guest accommodations. Good horses. Picturesque ranch life, swimming in private lake, tennis, fishing, small and big game hunting.

HUNEWILL CIRCLE H GUEST RANCH. Stanley H. Hunewill, manager. Mail and telegraph address, Bridgeport, California. Season, May 1 to November 1. 24 guests. Accommodations in ranch house and nearby sleeping cabins. Electric light. A genuine cattle ranch, informal but comfortable. Rates, \$43.50 per week, single; \$38.50 each per week, double. American plan, including saddle horses. Take Southern Pacific to Reno, Nevada, bus from Reno to Bridgeport, where ranch car will meet you by arrangement, without charge. Reno to Bridgeport, 115 miles; Bridgeport to ranch, 6 miles. Riding, fishing, swimming, hiking, ranch activities.

MARSHALLIA GUEST RANCH. Miss Ruth Davis, manager. Mail and telegraph address, Casmalia, California. Open all year. 24 guests. Rooms single or en suite. Tub and shower baths. Electric light and heat. Rates, \$60 and up per week, single; \$110 and up per week, double. Take Southern Pacific to Casmalia, California, where trains met by appointment—no charge. Casmalia to ranch, 5 miles. Rates are American plan and include horses and everything the ranch has to offer, except purely personal expenses. A cattle ranch, with 14 miles of Pacific Ocean frontage, rolling hills, mountains and wooded country.

PIERSON DUDE RANCH. George W. Pierson, managing owner. Telegraph address, Piedra, California. Mail address, Star Route, Box 54B, Sanger, California. Open all year. 20 guests. Accommodations in ranch house, electric lights, hot and cold water and baths. Also in rustic cabins, with stone fireplaces, running water and tub baths. Rates: In ranch house, \$42 and up per week, single; \$72 and up per week, double. In cabins, \$49 per week, single; \$91 per week, double. No charge for horses on regular daily rides. Take Southern Pacific to Fresno, California, where ranch car will meet you by appointment. Fare, Fresno to ranch (34 miles), \$5. No charge for return trip. Riding, swimming, canoeing, fishing and hunting in season, hiking and all other out-door activities that go with a western cattle and horse ranch.

RANCHO CARMELO. K. D. Mathiot, owner. Mail address, Monterey, California. Telegraph address, Carmel or Monterey, California. Open all year. 40 guests. Rates, April 1 to September 15, \$45 and up per week, single; \$40 each and up per week, double. 15 per cent reduction from these rates during other periods of the year. If saddle horses not desired, all rates \$5 per person less per week. Take Southern Pacific to Monterey, California, where trains met by appointment for a reasonable charge. Monterey to ranch, 20 miles. Riding, swimming, hunting, fishing.

SAN CLEMENTE RANCH. Henry Stowell, manager. Mail address, Monterey, California. Telegraph address, Carmel, California. Open all year. 40 guests. Single or double rooms, with bath or shower. Rates, \$7 per day or \$45 per week, American plan. Saddle horses, \$3 per day. Guides, \$5 per day. Take Southern Pacific to Monterey or Salinas, California, where ranch car meets you by arrangement, at a cost of \$2.50.

Ranch is beautifully situated in the Santa Lucia Mountains. Fishing, hunting in season, hiking, riding, swimming, boating, golf at nearby Del Monte.

SMOKE TREE RANCH. Jack Wentworth, manager. Mail and telegraph address, Palm Springs, California. Season, October 15 to May 15. 50 guests. Detached cottages, each room with private bath. Many cottages with private living room and fireplace. Rates: \$56 and up per week, single; \$98 and up per week, double. Saddle horses \$5 per day, \$17.50 per week, \$45 to \$60 per month. Also by the hour. Pack trip rates on application. Take Southern Pacific to Palm Springs, California, where ranch car will meet you by arrangement. Fare, Palm Springs to ranch (13 miles), \$4. Horseback riding. Desert and mountain hiking, badminton, tennis, swimming (separate children's pool) automobile trips, nature study, breakfast rides, picnics.

NEW MEXICO GUEST RANCHES

BONNELL RANCH. Mr. and Mrs. B. J. Bonnell, owners. Mail address, Glencoe, N. M. Telegraph address, Capitan, N. M. Open all year. 30 guests. Rates, \$15 per week, \$50 per month, American plan. Saddle horses, \$5 per week. Guide, \$2 per day. Pack trips—rates on application. Take Southern Pacific to Alamogordo, N. M. Daily stages from Alamogordo stop at ranch—distance 63 miles. Horseback riding, hiking, tennis, fishing, hunting in season.

C X RANCH. Mrs. Angie Cleve, manager. Mail address, Elk, N. M. Telegraph address, Artesia, N. M. Open all year. 7 guests. Rates, \$25 per week, \$65 per month, including saddle horse. Take Southern Pacific to Alamogordo or Cloudcroft, N. M. Auto fare, depot to ranch, \$1.50. Ranch is short distance from Mescalero Indian reservation and Carlsbad Caverns. Riding, hiking, hunting, fishing. Altitude, 6500 feet.

DOUBLE S RANCH. Jos. W. Sharp, manager. Mail address, Cliff, N. M. Telegraph address, Silver City, N. M. (Western Union). Open all year. 20 guests. Accommodations in adobe house and cabins. Rooms with connecting bath; cabins without bath. Rates, \$30 to \$55 per week, including saddle horse. Pack trips extra. Take Southern Pacific to Lordsburg, N. M., where ranch car meets you by arrangement. Transportation, Lordsburg to ranch (85 miles), \$7. Located at base of Mogollon Mountains, altitude 5300 feet. Riding, tennis, mountain climbing, fishing, hunting, camping, swimming.

LONE PINE RANCH. S. W. Land, manager. Mail address, Glencoe, N. M. Telegraph address, via Capitan, N. M. Open all year. 12 guests. Rates, \$15 per week, \$50 per four weeks. Saddle horses, \$5 per week. Rates for guides and pack trips on request. Take Southern Pacific to Alamogordo, N. M., thence stage to ranch. Fare \$1.30, distance 60 miles. An active cattle ranch, with comfortable accommodations. In historic Billy the Kid country. Altitude 6,000 feet. Horseback riding, hiking, hunting, fishing, plus the activities of ranch life.

MI CASA. Mrs. Osborne Wood, manager. Mail and telegraph address, La Luz, N. M. Open all year. 12 guests. Large, sunny rooms with open fireplaces. Rates, \$35 per week, including saddle horse. Guides and pack trips extra. Take Southern Pacific to Alamogordo, N. M., where ranch car will meet you by appointment without charge. Alamogordo to ranch, 8

miles. Riding, tennis, swimming, golf, picnics. Guests accepted only by advance arrangement.

T V BAR RANCH. Mr. and Mrs. Tom Threepersons, proprietors. Mail address, Gila, N. M. Telegraph address, Silver City, N. M. Open all year. 15 guests. Rate, \$7 per day, including horse. Pack trips extra. Take Southern Pacific to Deming, N. M. Ranch car will meet you at Silver City, N. M., without charge. Silver City to ranch, 31 miles. Altitude 5,000 feet. Riding, hiking, swimming, fishing, picnics, ranch activities.

NEVADA GUEST RANCHES

LONE STAR RANCH. J. L. Hash, owner. Mail and telegraph address, Reno, Nevada. Open all year. Rates, \$20 to \$25 per week. Saddle horses at reasonable rates. Take Southern Pacific to Reno, Nevada, where ranch car meets you by arrangement—no charge. Reno to ranch, 3 miles. A comfortable home, where guests find rest, quiet and excellent home cooking. Riding, hot springs, swimming, trap shooting.

MONTE CRISTO RANCH. Emma Warfield McCormick, manager. Mail and telegraph address, Sutcliffe, Nevada. 20 guests. Take Southern Pacific to Reno, Nevada, where ranch car will meet you by appointment. Reno to ranch, 35 miles. Rates, \$7 per day or \$200 per month, American plan. Comfortable ranch house and cabins, with all modern conveniences. Maid and valet service. Pack trips, rodeos, roping, riding, hiking, swimming, boating, fishing, picnics, motor trips, hunting in season.

NEVADA STOCK FARM DUDE RANCH. Wm. Hill, manager. Mail and telegraph address, Reno, Nevada. Open all year. 65 guests. Rate, \$40 per week, including saddle horse. Take Southern Pacific to Reno, Nevada, where ranch car meets you by appointment, without charge. Reno to ranch, 3 miles. Private rock cottages, with private baths, electric light, hot and cold water, oil-burner, hot water radiator heat. Horseback riding, tennis, moving pictures, swimming. Autos and pack trips without charge to ghost cities and points of interest. Hunting and fishing in season.

THE SAGE. Hill Sharp, manager. Mail address, Sutcliffe, Nevada. Telegraph address, Reno, Nevada. Open all year. 60 guests. Cabin tents; rooms with and without bath; private cottages. Rates, \$5.50 to \$10 per day, single; \$10 to \$18 per day, double, including horses. Daily station wagon service, ranch to Reno, no charge to guests. Take Southern Pacific to Reno, where you will be met by appointment. Located on the Piute Indian reservation, elevation 3783 feet. Horseback riding, swimming, fishing, hiking, sunbasking, trips to places of interest.

TH RANCH. Neill West, owner. Mail and telegraph address, Sutcliffe, Nevada. Open all year. 50 guests. Accommodations in cabins, with or without private bath. Rates, \$40 to \$50 per week, including guide and horses. Pack trips extra. Take Southern Pacific to Reno, Nevada, where ranch car meets you by appointment, without charge. Reno to ranch, 35 miles. Elevation 4,000 feet. Riding, hiking, swimming, fishing and hunting in season.

TEXAS GUEST RANCHES

GALLAGHER RANCH. Mrs. James McKay, manager. Mail address, P. O. Box 1138, San Antonio, Texas. Telegraph address, Gallagher Ranch, San Antonio, Texas. Season, November 1 to May 1. 35 guests. Rooms,

single or en suite, with or without bath. Also girls' dormitory. Rates, \$50 to \$80 per week, including guide and horses. Take Southern Pacific to San Antonio, Texas, where ranch car meets you by appointment—no charge. San Antonio to ranch, 30 miles. Located in wooded hill country, elevation 2,000 feet. Horseback riding, picnics, rodeos, swimming pool, barbecues, ping-pong.

MITRE PEAK RANCH. A. J. Tippet, proprietor. Mail and telegraph address, Alpine, Texas. Open all year. 100 guests. Accommodations in ranch house and lodges. Rates from \$7 to \$17.50 per week. Saddle horses, 50c per hour, \$2.50 per day. Guides, \$2 per day. Take Southern Pacific to Alpine, Texas. Alpine to ranch, 13 miles. Horseback riding, fishing, mountain climbing, swimming, golf, picnics, archery, rifle practice, ranch activities.

PRADE GUEST RANCH. E. T. Prade, proprietor. Mail and telegraph address, Leakey, Texas. Open all year. 25 guests. Rock cabins, red cement floors, cedar beamed ceilings, 9 windows to a bedroom, bath to each two bedrooms, electricity and sewerage. Rates, \$32.50 per week, single; \$30 each per week, double. Rates include horses, guides, pack trips. Take Southern Pacific to Sabinal, Texas, where ranch car meets you by appointment. Sabinal to ranch (60 miles) \$5. Riding, fishing, picnics, hunting in season.

WALDEMAR RESORT RANCH. Miss Doris Johnson, manager. Mail address, Hunt, Texas. Telegraph address, Kerrville, Texas. Season, January 1 to April 15. 50 guests. Accommodations in main lodge and rock cottages. Rates, \$45 to \$65 per week. Discounts for stays of one month or more. Take Southern Pacific to San Antonio, Texas. San Antonio to ranch, 85 miles. Horseback riding, fishing, archery, canoeing, target shooting, golf, bowling, ping-pong, quoits, tennis, billiards.

MEXICO GUEST RANCH

RANCHO EL ALAMO. Mrs. J. K. Drumm, manager. Mail address, Magdalena, Sonora, Mexico. Season, October 1 to May 1. 25 guests. Take Southern Pacific of Mexico to Magdalena, Sonora, Mexico. Altitude 3,500 feet. A walled, towered and terraced house of adobe and tile, in a valley surrounded by mountains. Large guest rooms, each with private bath. Enclosed pool, sun deck for sun-bathing on roof of main building. Riding, mountain climbing, hiking, picnicking, hunting.

RESORT HOTELS

Those who wish to winter in the Southwest but do not care for guest ranch life will find in Southern Arizona a number of high-class winter resort hotels providing the best of accommodations and service combined with delightful suburban surroundings, in a climate that makes outdoor life enjoyable the winter through. A list of the hotels follows.

ARIZONA BILTMORE. 8 miles northeast of Phoenix. Address, Box 2007, Phoenix, Arizona. About 300 guests. Season, November 1 to May 1. Accommodations in main building, cottages or individual houses. A modern structure of concrete on a 1,350-acre desert tract. Polo, tennis, swimming, golf, trap-shooting, riding, picnicking, weekly rodeo, nightly supper dansant.

ARIZONA INN. 2½ miles northwest of Tucson. Address, Tucson, Arizona. Season, November 1 to May 15. Altitude, 2400 feet. 75 guests. A desert resort of Spanish and Indian architecture, built in a circle around a patio. Accommodations in cottages. Large rooms, twin beds, private baths, sun porches, private entrances. Tennis, golf, swimming, riding.

CAMELBACK INN. 11 miles northeast of Phoenix. Mail address, Phoenix, Arizona. Guest rooms in Spanish-type bungalows, arranged for occupancy single or en suite. Oil furnace heat, private baths, room phones, Western Union service. Riding, putting green, badminton, shuffle board, ping-pong, croquet, horseshoes, golf driving net. Season, December 15 to May 1. 75 guests.

CASA SAHUARO. Address, Casa Grande, Arizona. A small inn in the desert. 11 guest rooms. The atmosphere of a private home. No attempt at entertaining. Season, November to May.

EL CONQUISTADOR. On a 120-acre tract just outside the city of Tucson, Arizona. A commodious main building containing dining room, lobby piazzas and some guest accommodations. Surrounded by guest bungalows which may be rented en suite or as individual rooms. 110 guests. Season, about December 1 to May 1. Riding, golf (three courses a few minutes from hotel), tennis on grounds, sun bathing on roof, dancing, bridge, musical entertainment.

EL PORTAL. Mrs. Gladys B. Sayner, manager. Address, Mesa, Arizona. Season, November to May. All rooms with private bath. Connecting suites with sitting rooms available. Steam and hot air heat. Tournament tennis court, shuffleboard, badminton and putting green on hotel grounds. Swimming pool two blocks distant. Picnics, chuck wagon dinners on the desert, motor trips to Indian country. Fishing available in season. Take Southern Pacific to Mesa, Arizona.

INGLESIDE INN. Mail address, Phoenix, Arizona. Ten miles from Phoenix, with all the advantages of the desert climate. The Inn centers a large acreage of lawn, flowers and orange, olive and grapefruit trees in full bearing. Lounge, dining and service rooms in main building. Cottages conveniently near, but remote enough for privacy. Steam heat. 60 guests. Golf, horseback riding, tennis, hikes, excursions and other diversions. Season, November to May.

JOKAKE INN. Mail address, Jokake, Arizona. Ten miles from Phoenix on southern slope of Camelback Mountain. Adobe construction. Cottages grouped around main building. All modern appointments. Schools adjacent to inn. 100 guests. Three excellent golf courses close by, riding, swimming in heated outdoor pool, tennis, hiking, picnicking, croquet, roque, archery, indoor amusements. Season, October 15 to May 1.

LODGE ON THE DESERT. Homer D. Lininger, manager. Address, Box 1151, Tucson, Arizona. Located on the desert, ten minutes from the heart of Tucson. Not a guest ranch or hotel, but a select lodge. 16 guests. Season, September 15 to May 15. Accommodations in the main lodge and patio houses. Single and double rooms with private bath. Rates, \$10 per day and up, American plan. Badminton, deck tennis or paddle tennis and swimming pool on grounds. Golf and polo grounds close by. Take Southern Pacific to Tucson, Arizona, where you will be met by appointment.

SAN MARCOS. Robert Foehl, managing director. Address, Chandler, Arizona. Accommodations in the hotel or private bungalows. Hotel rooms single or en suite. Bungalows steam heated; private baths, telephones and

individual gardens. Size, two to six rooms. 18-hole, all-grass golf course, swimming, bicycling, archery, tennis, badminton, riding. Fishing and hunting near by in season. Take Southern Pacific to Chandler, Arizona.

VAH-KI INN. Coolidge, Arizona. Small, exclusive, modern inn on outskirts of the town. Buildings of adobe in Spanish Colonial style, adjoining Casa Grande National Monument. Accommodations in main building and nearby cottages. 20 guests. Season, October 1 to May 1. Sun bathing, riding, tennis.

THE WIGWAM. Mail address, Litchfield Park, Arizona. Located near Phoenix, on the edge of a vast desert district. Combines the best features and services of the inn, hotel and guest ranch. Accommodations in bungalows surrounding the main Wigwam. 85 guests. Season, November 15 to May 1. Good schools near by. Golf, tennis, swimming, desert riding, bicycling, rodeos.

RANCH SCHOOLS

Listed below are ranch schools located in southern Arizona. The balmy winter climate of this section, permitting an active outdoor life, is of inestimable benefit to adolescents.

The schools are staffed with competent instructors, and have high scholastic standards. The recreational activities of students are of the nature of those found on the guest ranch and are carefully supervised with the object of combining relaxation with physical development. These schools provide under one management the best features of both the guest ranch and the private school.

Pupils suffering from communicable diseases are not accepted.

ARIZONA DESERT SCHOOL. Address, P. O. Box 1351, Tucson, Arizona. For boys. Located in the foothills of the Catalina Mountains, 10 miles from Tucson. Resident pupils only. Ages accepted, 8 to 15. School year, October to May. Physician; resident nurse. Course of study prepares for entrance to the fourth form of leading college preparatory schools. Complete information furnished by the school on application. Take Southern Pacific to Tucson, Arizona.

ARIZONA MILITARY ACADEMY. Address, Nogales, Arizona. Three separate schools. Upper school covers the work of the Senior, Junior and Sophomore years of high school. Middle school covers the work of the freshman year of high school, and the eighth and seventh grades of grammar school. Lower school covers the work of the sixth, fifth and fourth grades of grammar school. Summer camps are operated in Arizona in addition to the winter school, and tutoring is offered at camps when needed by the student. For full details write the school direct. Take Southern Pacific to Nogales, Arizona.

ARIZONA SUNSHINE SCHOOL. Address, P. O. Drawer 430, Tucson, Arizona. An outdoor school for children. Day pupils only. Students accepted from pre-school age through the eighth grade. Co-educational. Write the school for particulars. Take Southern Pacific to Tucson, Arizona.

EVANS SCHOOL. Address, Tucson, Arizona. For boys. Located 16 miles from Tucson, in the foothills. Resident pupils only. Ages accepted, 12 or over. School year, last Wednesday in September to third Saturday in May. School physician, resident nurse, infirmary. Course

comprises six years of college preparatory work. Complete information furnished by the school on application. Take Southern Pacific to Tucson, Arizona.

FRESNAL RANCH SCHOOL. Address, Tucson, Arizona. Located on a 15,000-acre ranch, about thirty miles from Tucson. Resident pupils. Accommodations for thirty boys between the sixth and twelfth grades. Complete information furnished by the school on application. Take Southern Pacific to Tucson, Arizona.

GREEN FIELDS SCHOOL. Address, Green Fields-Circle Double A Ranch, Tucson, Arizona. Located 9 miles from Tucson. Twenty resident and a limited number of day pupils. Work planned to meet requirements of eastern preparatory schools or the college entrance examination board. Write the school for complete information. Take Southern Pacific to Tucson, Arizona.

HACIENDA DEL SOL. Address, Tucson, Arizona. For girls. Located in the Santa Catalina foothills, ten miles from Tucson. Resident pupils. Girls from 12 to 18 years accepted. School year, October 1 to May 1. School doctor, resident nurse. The lower school covers seventh and eighth grade work, and the upper school offers a choice of a general academic course leading to graduation; or a college preparatory course. Complete information furnished by the school on application. Take Southern Pacific to Tucson, Arizona.

JOKAKE SCHOOL. Address, Jokake, Arizona. Located 10 miles from Phoenix, Arizona. For girls. Resident and day pupils. School year, October to May. Ages accepted, beginning at 6 years. Kindergarten, primary department, preparatory department, college preparatory course and a modified general course. For full information write the school direct. Take Southern Pacific to Phoenix, Arizona.

JUDSON SCHOOL FOR BOYS. Address, Phoenix, Arizona. Located twelve miles northeast of Phoenix. Term, October 5 to April 22, with customary vacation periods. All regular grammar school subjects are taught preparatory to admission to junior high school or a regular academic seventh grade. Physical education required of all pupils, with a large part of each day spent outdoors. Complete information

furnished by the school on application. Take Southern Pacific to Phoenix, Arizona.

JUDSON SCHOOL FOR GIRLS. Address, Phoenix, Arizona. Located ten miles northeast of Phoenix. Resident and day school pupils. Term, October 7 to May 2, with usual holiday vacations. All regular grammar school subjects are taught preparatory to admission to junior high school, or a regular academic seventh grade. Complete information furnished by the school on application. Take Southern Pacific to Phoenix, Arizona.

PALO VERDE RANCH SCHOOL FOR BOYS. Address, Mesa, Arizona. Located 10 miles from Mesa, Arizona. School year, October 5 to June 5. Resident pupils, limited to 25. School physician, resident nurse, infirmary. Ages accepted, 6 to 16 years. This schools also operates a summer camp at Escondido Lodge, Prescott, Arizona, for boys. Season, June 1 to September 1. Complete information furnished by the school on application. To reach the school, take Southern Pacific to Mesa, Arizona.

SOUTHERN ARIZONA SCHOOL FOR BOYS. Address, Sabino Canyon, Tucson, Arizona. Resident pupils only. Extensive outdoor recreation activities under supervision. Physician, resident nurse, infirmary. All academic courses for college preparation from sixth through twelfth grades offered. Students prepared for college entrance board examinations. School year, last week of September to middle of May. Complete information furnished by the school on application. Take Southern Pacific to Tucson, Arizona.

THE THOMAS SCHOOL. Address, Tucson, Arizona. Co-educational. Located on the desert, eight miles east of Tucson. School term, October 1 to May 1. Ages accepted, 5 to 14 years, limited to 30 pupils. Resident nurse. For complete information, write the school direct. Take Southern Pacific to Tucson, Arizona.

TUCSON SCHOOL FOR BOYS. Address, P. O. Box 2071, Tucson, Arizona. Resident and day pupils. School year, October 1 to May 31. Thorough preparation for college and the college entrance board examinations. For complete information write the school direct. Take Southern Pacific to Tucson, Arizona.



09771
June 31
(1941)

GUEST RANCHES

ALONG SOUTHERN PACIFIC LINES

Listed on these pages are guest ranches in Arizona, California, Mexico, New Mexico, Nevada, Oregon and Texas, served direct or conveniently reached by Southern Pacific lines.


Nearly every guest ranch issues a booklet or folder, usually well illustrated, which gives complete information as to its facilities, and a description of its scenic and other attractions. It is our recommendation that you send for this literature to the ranches in which you are interested. There is no obligation, and with the booklets in your hands the matter of making a satisfactory selection will be greatly facilitated.

The ranches invite correspondence and will be glad to answer any inquiries you desire to make. Reservations should be made direct with the ranch, and should be made in advance, as accommodations may not always be available at the height of the season.

The data on these pages has been carefully compiled from current information furnished us direct by the ranches, and while Southern Pacific assumes no responsibility for its accuracy, we believe it to be a correct representation of facts regarding the ranches enumerated at the date of issue.

SOUTHERN PACIFIC

Corrected to Sept. 1, 1941



INDEX

	PAGE
Arizona Guest Ranches	3
California Guest Ranches	12
Nevada Guest Ranches	14
New Mexico Guest Ranches	15
Oregon Guest Ranches	16
Texas Guest Ranches	16
Arizona Resort Hotels	18
Arizona Ranch Schools	20
Mexico Guest Ranches	22

ARIZONA GUEST RANCHES

ALEXANDER'S RANCH. Harry Alexander, Jr., proprietor. Mail and telegraph address, P. O. Box 1349, Tucson, Arizona. 10 guests. Accommodations in ranch house and cottages. Private or adjacent baths. Wood stoves, oil lamps. A real, old-fashioned cattle ranch. Winter season, November 1 to May 1. Summer season, May 1 to November 1. Rates: Winter season, \$25 to \$40 per week; \$100 to \$150 per month. Summer season, \$20 to \$25 per week; \$75 to \$100 per month. Children under 10, half rate. Rates include use of saddle horse and transportation to and from railroad depot, including baggage. Riding, ranch activities, hunting in season, badminton. Take Southern Pacific to Tucson, Ariz. where ranch car will meet you by appointment. Tucson to ranch, 30 miles.

BAR BR RANCH. Mrs. Robert R. Rowell, manager. Mail address, Box 2042, Tucson, Arizona. Season, September 1 to June 1. 15 guests. Accommodations in main ranch house and guest cottages. Private and connecting baths. Rates \$40 to \$50 per week. Riding, hiking, croquet, picnics, motor trips, badminton, quoits, target shooting. Take Southern Pacific to Tucson. Tucson to ranch, 8 miles.

BAR F X RANCH. Anthony O'Brien, manager. Mail and telegraph address, Wickenburg, Arizona. Season, October 1 to June 1. 20 guests. Rooms have steam heat and stove, private bath, electricity. Rates, \$45.50 and up per week, single; \$84 and up per week, double. Reductions for month and three-month stays, and for families. Saddle horses \$14 per week, \$50 per month. Horseback riding, badminton, tennis, croquet, target practice, practice polo. Take Southern Pacific to Phoenix, Arizona, where visitors are met by ranch car. Depot to ranch, 54 miles.

BISHOP'S GUEST RANCH. Mr. and Mrs. Gene Bishop, owners. Mail and telegraph address, Tempe, Arizona. 10 guests. Season, October 1 to May 15. Accommodations in main building and cottages. Electric heat and light in main building, oil heaters and electricity in cottages. Private or connecting bath. Rates: \$30 to \$35 per week; \$105 to \$125 per month. Children under 12, \$18 per week; \$60 per month. Saddle horses \$5 per week. Public school $\frac{1}{2}$ mile from ranch. Take Southern Pacific to Tempe, Arizona, where ranch car meets guests by appointment—no charge. Tempe to ranch, 2 miles.

BORDER GUEST RANCH. Rudy Becker, manager. Mail address, P. O. Box 2689, Tucson, Arizona. Telegraph address, Tucson. 18 guests. Open all year. Winter rates \$35 and up per week, \$125 per month. Rates for children on application. Special summer rates. Saddle horses \$10 per week. Accommodations in cottages with individual furnaces and electric light. Private baths. Public school 2 miles from ranch. Take Southern Pacific to Tucson, where you will be met by appointment—no charge.

BUTLER'S GUEST RANCH. Verdie Butler, manager. Mail address, R. F. D. 6, Box 740, Phoenix, Arizona. Season, October 1 to June 1. 10 guests. Prefer guests who will stay entire season for benefit of asthma, sinus or rheumatism. Attention given special diet. Saddle horses on ranch. Rates on application. 8 miles north of Phoenix. Take Southern Pacific to Phoenix, Arizona, where you will be met by appointment.

CACTUS FOREST RANCH. E. A. Peters, manager. Mail address, Box 396, Florence, Arizona. The ranch caters to the guest who desires privacy, quiet and restful surroundings. Accommodations in cottages spaced two hundred feet apart, each with a sunbath patio. Kitchenettes are completely equipped and one may prepare meals as desired. Excellent food is obtainable at the ranch's Chuck Wagon Cafe. Cottages vary in size; rates, European plan, vary from \$50 to \$150 per month, depending on accommodations and size of party. Take Southern Pacific to Coolidge, Arizona, where ranch car will meet you by appointment, without charge.

CARR CANYON RANCH. Capt. John H. Healy, manager. Mail and telegraph address, Hereford, Arizona. 12 to 16 guests. Open all year. Accommodations in ranch house and cottages. Gas, fireplaces and wood stoves, electric lights. Hot and cold water. Private baths. Rates: \$45 per week, single; \$35 each per week, double. Children, \$35 per week—less if no horse wanted. Rates include use of saddle horse and transportation to and from ranch and depot. Private tutor on ranch, charge \$1 per hour. Public school 7 miles from ranch. Take Southern Pacific to Hereford, Arizona, where you will be met by appointment, without charge. Hereford to ranch, 12 miles.

CASA HERMOSA. Lon Megargee, manager. Mail address, Route 7, Box 469, Phoenix, Arizona. Telegraph address, Phoenix. Season October 10 to June 1. Accommodations in main ranch house and cottages. Fireplaces, steam heat, electric light, private baths. Rate per week \$40 minimum. Saddle horses \$1 per hour. 12 guests. Public school 2 miles from ranch. Take Southern Pacific to Phoenix, where you will be met by appointment, without charge. Trunks \$2 each.

CHAMPIE RANCH. Clyde Douglas, manager. Mail address, Hot Springs, Arizona. Season, November 1 to June 1. Accommodations in two- and four-room bungalows, with private baths, electric light and heat. Children welcome. Tutoring arranged. Take Southern Pacific to Phoenix, Arizona, where guests are met by appointment without charge. Rates on application.

CIRCLE "Z" GUEST RANCH. Mr. and Mrs. Lee Zinsmeister, owners and managers. Mail address, Patagonia, Arizona. Telegraph address, Nogales, Arizona. 60 guests. Accommodations in cottages. Steam heat, electricity, private or connecting baths. Seasons: winter, October 1 to June 1; summer, July and August. Rates: Oct. 1 to Jan. 15 and Apr. 1 to June 1, \$55 to \$65 single; \$90 to \$110 double. Jan. 15 to Apr. 1, \$65 to \$75 single; \$120 to \$130 double. Children 5 or under, 20% discount. Use of saddle horse included in rates. Tennis, badminton, swimming, target shooting, croquet, shuffle board, ping-pong, riding, etc. Public school 5 miles from ranch. From the East take Southern Pacific to Tucson, Arizona; from the West, Southern Pacific to Nogales, Arizona. Transportation to ranch, \$10 from Tucson, each way; \$2 from Nogales, Arizona each way.

CONRAD GUEST RANCH. Mr. and Mrs. C. B. Conrad, proprietors. Mail address, Route 4, Box 715, Tucson, Arizona. Telegraph address, Tucson, 4985. 20 guests. Open all year. Accommodations in main house or cottages. Circulating heaters, electricity, private or connecting baths. Rates, \$50 to \$60 per week. Children, under 12, \$40 to \$50 per week. Rates include use of saddle horse. Badminton, swimming pool. Public school 1½ miles from ranch. Take Southern Pacific to Tucson, Arizona, where ranch car meets guests by appointment—no charge. Hand baggage, free; trunks \$1.

CURLEY HORSE RANCH. Mrs. Mimi A. Abbott, owner and manager. Mail and telegraph address, Sonoita, Arizona. Open all year. 12 guests. Rates, \$35 and \$40 per week. Children under 12, \$25 per week. Rates include use of saddle horse. Accommodations in ranch house and cottages. Fireplaces and oil heaters, electric light, private or connecting baths. Badminton, riding, hiking, horseshoes, picnics. Country school 3 miles from ranch. Take Southern Pacific to Fairbank or Tucson, Arizona. Ranch car will meet you at either place by appointment; charge \$3. Tucson to ranch 48 miles; Fairbank 33 miles.

DESERT WILLOW RANCH. M. C. Perrine, manager. Mail and telegraph address, Tucson, Arizona. Season, October 1 to May 1. 40 guests. Rates, \$35 to \$70 per week, American plan, including use of saddle horse. Pack trips extra. Accommodations in main ranch house and cottages. Furnace and steam heat, electric light, private or connecting baths. Public school one mile from ranch. Tennis, badminton, archery, horseback riding. Take Southern Pacific to Tucson, Arizona, where ranch car meets guests by appointment, without charge.

DIAMOND C RANCH. Mrs. C. Moson, owner. Mail and telegraph address, Elgin, Arizona. A real cattle ranch in the Huachuca Mountains. Open all year. 14 guests. Accommodations in main ranch house and cabins. Private or connecting baths. Grade school 4 miles from ranch. Rates, \$35 to \$45 per month. Children under 5, \$25 to \$35 per month. Use of saddle horse \$5 per week. Pack trips \$10 per day for guide. Take Southern Pacific to Tucson, Arizona, where ranch car will meet you by appointment—charge \$7.50 including baggage.

DIAMOND W RANCH. Julia A. Bennett, president. Mail address, Route 2, Box 464, Tucson, Arizona. Telegraph address, Tucson. Season, October 1 to May 15. 35 guests. Rates \$70 per week, including use of saddle horse. Special rates for long bookings and families with children. Accommodations in main ranch house and cottages. Steam heat, electricity, adjoining baths. Public school 6 miles from ranch. Tennis, badminton, archery, ping-pong room, riding. Take Southern Pacific to Tucson, where ranch car will meet you by appointment—no charge. Tucson to ranch, 12 miles.

DOUBLE U RANCH. Armand A. Retter, manager. Mail address, Box 510, Tucson, Arizona. Season, September 1 to June 1. Modern accommodations in beautiful cottages. Capacity, 30 guests. All rooms have private bath. Ranch with Spanish-style main house and attractive green patios, is advantageously situated in the Catalina Mountains. Recreation court, riding, mountain trips, moonlight picnics, western dances. Fine cuisine on American plan. Rates on request. Take Southern Pacific to Tucson, Arizona, where guests are met by prearrangement. Depot to ranch, 14 miles.

EL CORONADO RANCH. Curtis C. Cooper, Jr., owner-manager. Mail address, Pearce, Arizona. Telegraph address, Douglas, Arizona. Open all year. 20 guests. Rooms single, double or en suite, all with private bath. Hot and cold water. Central heating. Public school 2 miles from ranch. Rates \$60 per week, \$200 per month, include saddle horse. Swimming pool, archery, trap shooting, ping-pong. An operating cattle and horse ranch in the Chiricahua Mountains. Elevation 5600 feet. Lion hunting from the ranch by special arrangement with Lee brothers and their famous dogs. Take Southern Pacific to Douglas, Arizona, where you will be met by appointment—no charge.

EL PORTAL SUMMER RANCH FOR CHILDREN. Miss Myriam Toles, director. Mail address, Portal, Arizona. Girls from 6 to 12; boys from 6 to 10. Capacity, 20. Rate \$25 per week, plus \$1 for laundry weekly. American plan and includes use of saddle horse. Accommodations in main house and dormitory. Season, June 15 to August 15 or 20. Workshop equipment for crafts, playground equipment, piano, burro cart, picnicking, camping, indoor games. Healthful program of outdoor play, swimming and riding under careful supervision. Puppetry, crafts and Indian lore. Limited number permits much individual attention. Regular rest periods. Nurse and doctor in attendance. Telephone and telegraph connections. Mail daily. Take Southern Pacific to Rodeo, New Mexico, where guests met by appointment—no charge. Rodeo to ranch, 9 miles.

EL RANCHO AMISTOSO. Edward D. Merikle, Jr., manager. Mail address, Route 2, Box 512, Tucson, Arizona. Telegraph address, Tucson. Season, November 1 to May 1. 6 to 8 guests. Accommodations in main house and a guest cottage. Ranch house heated by hot water furnace; cottage by gas heat. Private or adjoining baths. Electric light. Rate \$45 per week, maximum; \$175 monthly, maximum. Saddle horse \$10 per week, \$30 per month. Public school $\frac{3}{4}$ mile from ranch. El Rancho Amistoso stresses a very friendly, homelike atmosphere, a most desirable clientele, excellent meals and plenty of rest and quiet in addition to many good times for all. Take Southern Pacific to Tucson, Arizona, where you will be met by appointment—no charge. Charge for delivery of trunks. Tucson to ranch, 12 miles.

EL RANCHO BLANCO. Carl W. White, owner. Mail and telegraph address, Tubac, Arizona. Season, October 1 to June 1. 8 guests. Tub and shower baths. Gas heat in all rooms. Fireplace in large living and

game room. Rates \$25 to \$40 per week, including saddle horse. Take Southern Pacific to Tucson, Arizona, where ranch car will meet you by appointment. Tucson to ranch, 45 miles.

FARAWAY RANCH. E. M. Riggs, manager. Mail address Dos Cabezas, Arizona. Telegraph address, Douglas, Arizona. Open all year. 12 to 15 guests. Accommodations in main house and cabins. Private or adjoining baths. Hot and cold water. Rates \$25 per week per person, single or with twin beds; \$22.50 per week per person, rooms with double beds. Room with private bath \$30 per week per person, single; \$27.50 per week per person, double. Also housekeeping cottages. Saddle horses \$2.50 per day. Swimming pool, riding, picnics, dancing. Public school 2 miles from ranch. Gateway to the Wonderland of Rocks, Chiricahua National Monument. Take Southern Pacific to Willcox or Douglas, Arizona. Ranch car will meet guests by appointment at following rates: Wilcox, \$2.50 for one, \$3 for two. Douglas, \$5 for one, \$7.50 for two. Hand baggage free. Trunks: Willcox \$2, Douglas \$4.

FLYING V RANCH. L. A. Gillham, owner-manager. Mail address, P. O. Box 1991, Tucson, Arizona. Telegraph address, Tucson. Season, October 1 to May 1. 35 guests. Accommodations in ranch house and cottages. Central heat, electric light, hot water, private baths. Rates, \$75 per week, single; \$65 per week per person, double. Children under 7, half rate. No charge for saddle horse. Public school 14 miles from ranch. Private rodeo field—ranch rodeos weekly. Overnight pack trips a specialty. Take Southern Pacific to Tucson, Arizona. Ranch car meets guests, no charge. A real cattle ranch.

GRAVES GUEST RANCH. Mary Graves Brown, manager. Mail address, Scottsdale, Arizona. Telegraph address, Phoenix, Ariz., phone 94616. 18 to 20 guests. Season October 15 to May 1. Stove heat, electric light, private baths. Rates \$20 to \$30 per week; children under 8 half rate. Saddle horses may be rented nearby for \$10 per week. Badminton, croquet, ping-pong, shuffle board. Grade school 4 blocks distant. Take Southern Pacific to Phoenix or Tempe, Arizona. Guests met at train by appointment—no charge.

HACIENDA LOS ENCINOS. E. Neil Carr, owner and manager. Mail and telegraph address, Sonoita, Arizona. Open all year. 20 guests. Rates, \$40 to \$60 per week, including use of saddle horse. Children 7 and under, half rate if on extra cot. Accommodations in cottages. Steam heat, electric light, private baths. Public school 1½ miles from ranch. Tennis, badminton, swimming pool, croquet, horseshoes, skeet shooting, deck tennis. Take Southern Pacific to Tucson or Fairbank, Arizona, where ranch car will meet you by appointment, without charge. Charge for transporting trunks.

HARRISON ELGIN RANCH. Frank and Helena L. Harrison, owners. Mail address, Elgin, Arizona. Open all year. Winter rates, beginning October 31, \$30 per week, \$100 per month. Saddle horses extra. A quiet, restful place. No attempt at entertainment. Elevation, 4,700 feet. Ranch is located 60 miles southeast of Tucson, Arizona.

JAY SIX CATTLE RANCH. Jack Speiden, owner. Mail and telegraph address, Benson, Arizona. Open all year. 10 guests. Accommodations in cottages. Fireplaces, gas heaters, electric light, private baths. Rates on application. Riding, cattle activities, swimming, shooting and trapping in season, hiking, pack trips. Take Southern Pacific to Benson, Arizona, where ranch car will meet you without charge.

KAY-EL-BAR RANCH. J. H. Collins, manager. Mail and telegraph address, Wickenburg, Arizona. 20 to 22 guests. Season October 1 to May 1. Accommodations in main ranch house and cottages. Furnace heat, electric light, private or adjoining baths. Rates, including saddle horses, \$55 to \$65 per week; \$200 to \$240 per month. Children, 8 or under, ½ off; 12 or under, ⅓ off. Pack trips extra. Badminton, swimming pool, shuffleboard, horseshoes, croquet, rodeos. Private tutor on the ranch—\$1 per hour. Public school 3 miles from ranch.

Take Southern Pacific to Phoenix, Arizona, where ranch car will meet you without charge. Phoenix to ranch, 53 miles.

KENYON RANCH. Mr. and Mrs. W. T. Allen, owners. Mail and telegraph address, Tubac, Santa Cruz Co., Arizona. 25 guests. Season November 1 to May 1. Rates \$55 to \$70 per week, including saddle horses. Accommodations in two- to four-room cottages around patios. Every room has private or connecting bath, butane heat, electric light. Hot water. Riding, indoor skeeball, ping-pong, archery, horseshoes, croquet, rifle range, outdoor shuffleboard. Public school one mile from ranch. Take Southern Pacific to Tucson, Arizona, where you will be met by appointment without charge. Tucson to ranch, 45 miles. Trunks \$1 each.

LA HACIENDA GUEST RANCH. Mable and Ruth Blake, owners and managers. Mail address, Casa Grande, Arizona. Season, October 15 to May 15. 8 guests. Rates on application. Accommodations in ranch house. Take Southern Pacific to Casa Grande, Arizona, where guests met by appointment, without charge. Casa Grande to ranch, 5 miles.

LA SIESTA DEL MONTE. Mrs. Anna M. Roush, manager. Mail address, Portal, Arizona. Telegraph address, Rodeo, N. M. or Douglas, Ariz. Open all year. 15 guests. Rate, \$20 per week, American plan. Saddle horses, \$2 per day. Accommodations in main ranch house and dormitories. Detached baths. Hot and cold water. Fireplaces, stoves. Run mostly as a rest home, but provide horseback riding, hiking, motor trips, dancing and usual activities of a guest ranch. Take Southern Pacific to Rodeo, N. M. Rodeo to ranch, 10 miles.

LAZY J 2 RANCH. Mrs. Dorothea S. Meigs, manager. Mail and telegraph address, Patagonia, Arizona. Open all year. 12 guests. Rates \$50 per week, \$200 per month, including use of saddle horse. Children's rates by arrangement. Accommodations in main house and cottages. Private or detached baths. Private school, 4 miles, and public school 1 mile from ranch. Take Southern Pacific to Hereford or Tucson, Arizona. Ranch car will meet you at either point, without charge.

LAZY K BAR RANCH. Paul Van Cleve, Jr., manager. Mail address, Cortaro, Arizona. Telegraph address, Tucson, Arizona. Season, October 15 to May 15. 16 guests. Rates \$50 to \$70 per week. Special rates for long stays, and for families. Accommodations in main house and cottages. Fireplaces, heaters, electric light, private baths. Rates include use of saddle horse. Private school 4 miles, and public school 2 miles from ranch. Take Southern Pacific to Tucson, where ranch car meets guests by appointment, without charge.

LAZY RC RANCH. Frank Corwin, manager. Mail and telegraph address, Wickenburg, Arizona. Season, October 1 to June 1. 14 guests. Rates \$50 to \$55 per week; \$175 to \$195 per month, saddle horses included. Special rates for children under 7. Accommodations in main ranch house and guest house. Electric light, private or detached baths. Badminton, riding, picnics, chuck wagon feed a specialty, pack trips (no extra charge), rodeo, horse shows for guests only. Public school 4 miles from ranch. Take Southern Pacific to Phoenix, Arizona, where ranch car meets guests by appointment, without charge. Also vacation ranch for boys 12 to 16, June 15 to August 1. Write Lazy RC Ranch for information and rates.

LOS CERROS RANCH. H. A. Elliott, owner. Mail address, Oracle Star Route, Tucson, Arizona. Telegraph address, Tucson. Season, October 15 to May 15. 20 guests. Rates \$45 to \$65 per week; \$180 to \$260 per month. Rates for children on request. No charge for saddle horses. Accommodations modern with electric light, running water in all rooms, private or connecting baths, fireplace heat. Riding, shooting, ping-pong, dancing, sunbathing, trapping, cards, music. Private school 3 miles from ranch. Take Southern Pacific to Tucson, where ranch car meets guests by appointment, without charge. Tucson to ranch, 20 miles.

LOS RANCHOS PERKINS. Leroy C. Perkins, general manager. Mail and telegraph address, Tucson, Arizona. Open all year. 60 guests. Accommodations in guest cottages, each with furnace heat, electricity and bath; also in the Ranch House. Cafe and bar at ranch, open to public. Stable of horses for guests' use. Houses may be leased for any period of year. Public school adjoins ranch property. Accommodations in the ranch house are on American plan, or breakfast only if preferred. Rates for cottages depend on service and accommodations desired. Full details will be furnished by the management on application. Take Southern Pacific to Tucson, Arizona, where ranch car meets guests by appointment, without charge.

MONTE VISTA RANCH. Lewis C. White, owner. Mail and telegraph address, Wickenburg, Ariz. Season, October 15 to May 15. 30 guests. Rates, \$50 to \$75 per week, single; \$100 to \$140 per week double; \$200 to \$300 per month, single; \$350 to \$500 per month, double. Special rates quoted to families. Rates include saddle horses and guide service. Accommodations in main ranch house and cottages. Automatic heat, electric light, private and connecting baths. Private tutor on ranch—\$1 per hour. Public school 2 miles from ranch. Take Southern Pacific to Phoenix, Arizona, where ranch car meets guests without charge, on appointment. Baggage transfer 35c per 100 lbs. This is a working cow ranch.

MUSTANG RANCH. Mr. and Mrs. C. S. Collie, owners. Mail address, Elgin, Arizona. Open all year. 10 guests. Winter rates, including saddle horse, \$35 per week, \$125 per month. A small guest ranch of the family type, located in real cow country. Elevation 5,000 feet. Take Southern Pacific to Tucson or Fairbank, Arizona. Tucson to ranch, 65 miles. Fairbank to ranch, 30 miles.

OLD HOMESTEAD RANCH. Margaret Weiler, owner. Mail and telegraph address, Route 5, Box 700, Phoenix, Arizona. Open all year. 8 to 10 guests. A modern ranch home in the center of a citrus orchard. Accommodations in ranch house and cottages. Connecting or detached baths. Rates, including saddle horse, \$20 per week; children under 12 years, \$10 per week. Take Southern Pacific to Phoenix, Arizona, where ranch car meets guests without charge. Phoenix to ranch, 4 miles.

RANCHO DEL QUIVARI. Ruth W. Dickinson, manager. Mail and telegraph address, Sasabe Star Route, Tucson, Arizona. Located 65 miles southeast of Tucson, Arizona. Open all year. 16 guests. Rates \$55 to \$60 per week. May 1 to December 1, 20% reduction. Monthly and family rates on request. No charge for saddle horses. Accommodations in ranch house and cottages. Fireplace and gas heat, electric light, private baths. Tennis court, swimming pool, sun deck. Public school 6 miles from ranch. Take Southern Pacific to Tucson, Arizona, where ranch car will meet you by appointment—fare \$5 one way, \$10 round trip.

RANCHO DE LA OSA. Dick Jenkins, manager. Mail address, Sasabe, Arizona. Telegraph address, Tucson, Arizona. Season, September 15 to May 15. 35 guests. Rate including saddle horse, \$60 per week. Accommodations in ranch house and cottages. Fireplaces, electric light, private baths. Tennis, riding, swimming pool, badminton. Public school 1 mile from ranch. Take Southern Pacific to Tucson, where ranch car meets guests by arrangement. Charge, \$5 per person. Tucson to ranch, 65 miles.

RANCHO DE LOS ROBLES. Park G. Parker, operator. Mail and telegraph address, Oracle, Arizona. Open all year. 30 guests. Rate \$50 and up per week. Monthly rates and rates for children on application. No charge for saddle horses. Accommodations in cottages with hot water, hot-air wood stoves, electric light and private or connecting baths. Badminton, quoits, ping-pong, croquet, shooting, darts. Public school 1 mile from ranch. Hunting, pack trips, picnics, barbecues. Take Southern Pacific to Tucson, where ranch car will meet you by appointment, without charge. Tucson to ranch, 36 miles.

RANCHO EMANONO. Ernest and Helen K. Greene, owners. Mail address, Sells Star Route, Tucson, Arizona. Open all year. 10 guests. Rates, November through March, \$50 to \$60 per week; \$200 to \$250 per month, including use of saddle horse. Pack trips extra. Accommodations in cottages with circulating heaters, electric light, private or detached baths. Public school 12 miles from ranch. A working cattle ranch of 15,000 acres, situated on a mesa with mountains on all sides. Riding, hunting, and trips to nearby points of interest. Take Southern Pacific to Tucson, Arizona, where ranch car will meet you by appointment, without charge. Depot to ranch, 14 miles.

RANCHO GRANDE. P. G. B. Morris, manager. Mail and telegraph address, Nogales, Arizona. Open all year. Located on a hilltop, three miles from Nogales, Arizona and the international border. Accommodations may be had singly or en suite in the main building. Private bungalows also available. Steam heat throughout. Riding, badminton, shuffleboard, tennis, trap and skeet shooting, archery, ping-pong, quoits, billiards, pool. Golf course nearby. Hunting within a few miles of the ranch. The management can make all arrangements for hunting parties into Old Mexico. Rates begin at \$8 per person, single, and \$7 per person, double, per day, American plan. There are no extras, except a nominal rental for saddle horses. Take Southern Pacific to Tucson or Nogales, where ranch car will meet you by pre-arrangement. Tucson to ranch, 67 miles. Nogales to ranch, 3 miles.

RANCHO KO-MAT-KE. Jack and Helen Albrecht, managing owners. Mail address, R. R. 12, Box 180, Phoenix, Ariz. Season, October 1 to June 1. 8 guests. Rates, \$42.50 to \$47.50 per week, single; \$60 to \$65 per week, double. Lower by the month. Do not cater to children. Accommodations in ranch house. Furnace heat, electric light, private baths. Badminton, horseshoes, croquet, shuffleboard, hiking, sun deck. Located in a 20-acre citrus grove. Horses are available nearby, but the management caters more to those desiring rest, fresh air and sunshine. Take Southern Pacific to Phoenix, Arizona, where ranch car meets guests by appointment without charge. Phoenix to ranch, 6 miles.

RANCHO LINDA VISTA. Boyd M. Wilson, manager. Mail address, Oracle, Arizona. Telegraph address, Tucson, Arizona. Season, October 1 to June 1. 50 guests. Accommodations in cottages with electric light and private or connecting baths. Rate, including saddle horse, \$60 per week. Children under 5, half rate; 5 to 7, two-thirds rate. Guides for pack trips \$5 per day. A real cattle ranch in the foothills of the Catalina Mountains. Public school 1½ miles from ranch. Take Southern Pacific to Tucson where ranch car will meet you—charge \$5 one way, \$10 roundtrip, if stay is less than two weeks. No charge if over 2 weeks. Tucson to ranch, 30 miles.

RANCHO LOMA VERDE. Charles W. Disbrow, manager. Mail and telegraph address, Coolidge, Arizona. Season, October to May. 16 guests. Rates, including saddle horse, \$40 and up per week; per month, 10% discount. Reduced rates for children under 12. Accommodations in ranch house and cottages. Electricity, private baths. Public school 9 miles from ranch. Tutoring on ranch if desired. Take Southern Pacific to Coolidge, Arizona, where ranch car meets guests by appointment without charge. Coolidge to ranch, 10 miles.

RANCHO NEZHONE. Vent Wade, manager. Mail address, Box 2151, Tucson, Arizona. Telegraph address, phone 2006, Tucson. Season, October 15 to May 15. 32 guests. Accommodations in main ranch house and guest cottages. Furnace heat, electric light, private baths. Rates, including saddle horses, \$60 per week and up. Badminton, swimming pool, 9-hole putting course, riding, croquet, shuffleboard, archery. Public school 5 miles from ranch. Located 8½ miles north of Tucson, Arizona, ranch house and guest cottages surrounded by citrus, palm and eucalyptus trees, flowers and lawns. Spanish style construction, with large patio and sun decks. Take Southern Pacific to Tucson, Arizona, where ranch car will meet you by appointment, without charge.

RANCHO SOLEDAD. E. Teasdale Sterben, owner. Mail and telegraph address, Florence, Arizona. Open all year. 8 guests. Rates \$30 per week, \$125 per month; children under 8, half rate. Accommodations in main ranch house. Stove heat, electric light, private baths. Badminton court. Public school 5 miles from ranch. Housekeeping apartments available. Take Southern Pacific to Coolidge, Arizona, where ranch car meets guests by appointment without charge.

REMUDA RANCH. Jack Burden, owner-manager. Carl Stibolt, asst. manager. Mail and telegraph address, Wickenburg, Arizona. Season, October 1 to May 1. 50 guests. Rates, \$5.50 and up per day, single; \$10 and up per day, double. Discounts for extended stays. Lower rates for children, depending on age, etc. Saddle horses extra. Accommodations in cottages with central heat, electric light and private, connecting or detached baths. Tennis, badminton, heated swimming pool, riding, picnics, pack trips, hunting in season, ping-pong, croquet, rodeos, pool, billiards, ranch activities. Day school on ranch. Tuition, \$40 per month through 3rd grade; \$50 per month to high school. Public school 1½ miles from ranch. One of the oldest ranches in Arizona. Although completely modern throughout, it is a ranch. Take Southern Pacific to Phoenix, Arizona, where ranch car will meet you by appointment—no charge. Phoenix to ranch, 54 miles.

SAHUARO LAKE RANCH. Phil K. Lewis, owner-manager. Mail and telegraph address, Mesa, Arizona. Season, October 15 to May 1. 40 guests. Rates \$45 to \$55 per week; children 8 and under, \$25 per week. Saddle horses, \$10 per week. Accommodations in main ranch house and cottages. Cottages have stove heat, electric light and private baths. Riding, badminton, croquet, horseshoes, boating, motor boating, fishing, chuck wagon picnics, rodeo arena. Ranch school for children; tuition \$15 per month. Ranch located in a sheltered spot at the foot of lofty, colorful mountains. Forests of giant sahuaro cactus. Western atmosphere in real cattle country. Take Southern Pacific to Mesa, Arizona, where ranch car meets guests by appointment, without charge. Mesa to ranch, 23 miles.

SAHUARO VISTA RANCH. A. G. Adams, owner. Mail and telegraph address, Tucson, Arizona. Season, September 1 to June 1. 20 guests. Rates, including saddle horse, \$35 to \$50 per week. Discounts for extended stays and also for children up to 12 years. Accommodations in main ranch house and cottages. Badminton, riding, pack trips, sun decks, reading room. A restful resort, with a home atmosphere. Take Southern Pacific to Tucson, Arizona, where you will be met by appointment, without charge. Tucson to ranch, 12½ miles.

SEVENTY-SIX RANCH. Claire N. Webb, manager. Mail address, Bonita, Arizona. Telegraph address, Willcox, Arizona. Open all year. 35-40 guests. Rates, including saddle horses, May 1 to Oct. 1, \$30-\$35 per week; \$120-\$135 per month. Oct. 1 to May 1, \$40-\$45 per week; \$160-\$175 per month. Reduced rates for children. Accommodations in main ranch house and cottages. Fireplaces, stoves, lamps, private baths. Swimming pool. Hunting in season. Pack trips, if desired. Located at foot of Graham Mountains, altitude 5,300 feet. Delightful all-year climate. Public school 8 miles from ranch. Take Southern Pacific to Willcox, Arizona, where you will be met by appointment, without charge.

SILVER BELL GUEST RANCH. Mr. and Mrs. Bud Mann, owners. Mail and telegraph address, Silver Bell Road, Tucson, Arizona. Guest rooms in two, three and four-room buildings. Steam heat, electricity, private or connecting baths. Take Southern Pacific to Tucson, Arizona, where you will be met by appointment. Rates on application.

SONOITA VALLEY RANCH. J. Prentice Sanger, owner. Mail and telegraph address, Sonoita, Arizona. Season, November 1 to May 1. 25 guests. Rates on request. Accommodations in cottages with gas stoves, electric light and private baths. An operating cattle ranch. Public school 1 mile from ranch. Take Southern Pacific to Tucson,

Arizona, where you will be met by appointment. Tucson to ranch (42 miles) \$5 per person; trunks 50c each.

SQUAW PEAK GUEST RANCH. Mail address, Phoenix, Arizona. Season, November 1 to May 15. Modern buildings of Spanish architecture. Riding horses. Rates on application. Take Southern Pacific to Phoenix, Arizona. Depot to ranch, 15 miles.

TANQUE VERDE RANCH. James P. Converse, owner. Mail and telegraph address, P. O. Box 1831, Tucson, Ariz. Season, October 15 to May 15. 22 guests. Rates \$50 to \$65 per week, including use of saddle horse. Accommodations in main ranch house and cottages. Steam and fireplace heat, electric light, private or connecting baths. Badminton, swimming pool, cattle ranch activities. Public school 4 miles from ranch. Take Southern Pacific to Tucson, Ariz., where you will be met by appointment. Depot to ranch, 18 miles.

TONY BELLE GUEST RANCH. John O. Devlin, owner-manager. Mail and telegraph address, 4840 No. Central Ave., Phoenix, Arizona. Season, September to July. 20 guests. Rates \$5 per day and up. No accommodations for children. Stables close by where horses may be hired. Accommodations in cottages with central heating, electric light and private baths. Badminton, swimming pool, table tennis, table croquet. Indoor lounge. Take Southern Pacific to Phoenix, Arizona where you will be met by appointment, without charge.

TRIANGLE T RANCH. D. G. Huntington and Marjorie W. Murphree, managers. Mail address, Dragoon, Arizona. Telegraph address, Benson, Arizona. Open all year. Capacity, 25 guests. Accommodations in cottages with private or connecting baths. Rates, \$50 to \$65 per week, including use of saddle horse. Discounts for extended stays. Children under 7, half rate. Tennis, badminton, ping-pong, croquet, blue rock trap, target range, riding. Public school 3 miles from ranch. Take Southern Pacific to Dragoon, Arizona, where ranch car meets guests by appointment, without charge. Depot to ranch, 3 miles.

TRIANGLE W RANCH. Charles D. Williams, owner. Mail and telegraph address, Wickenburg, Arizona. Season, October to May. 20 guests. Rates, \$60 to \$80 per week, single; \$55 to \$70 per person, per week, double. Rates for children on application. No charge for saddle horse. Pack trips extra. Accommodations in main ranch house and guest houses. Central heating, electric light, private or connecting baths. Desert suppers, croquet, riding, horseshoes, ping-pong, practice polo, badminton. Rodeo field on ranch. Public school 2 miles from ranch. Take Southern Pacific to Phoenix, Arizona, where you will be met by appointment without charge.

VALLEY RANCH. S. T. Pence, owner. Mail and telegraph address, Box 2163, Tucson, Arizona. Season, October 15 to June 1. 8 guests. Rates, \$40 per week; \$150 per month. No children under 16. No charge for saddle horse. Accommodations in cottages. Stove and fireplace heat, lamps, private baths. Badminton, croquet, horseshoes, ping-pong, hiking and riding. Take Southern Pacific to Tucson, Arizona, where you will be met by appointment, without charge. Depot to ranch, 25 miles.

VISTA AL NORTE. Earl F. Gale and Mary B. Marr, owners and managers. Mail address, Box 4276, Tucson, Arizona. Telegraph address, phone 010-J4, Tucson. Open all year, 10-16 guests. Rates, \$25 to \$40 per week; \$100 to \$150 per month. Saddle horses, 50c to \$1 per hour; \$7.50 per week. Pack trips extra. Accommodations in main house and annex. Circulating heaters, electric light, private or connecting baths. Public school 5 miles from ranch. Take Southern Pacific to Tucson, Arizona, where ranch car meets guests by appointment without charge. Baggage extra. Depot to ranch, 7 miles.

WANADA LODGE. Miss Emma M. Wolf, manager. Mail address, Route 2, Box 354, Phoenix, Arizona. Telegraph address, Phoenix. Season, September 15 to June 15. 12-14 guests. Rates, \$40 per week;

\$145 per month. Ranch has no horses, but they may be rented outside. Accommodations in cottages with individual heaters, electric light and connecting baths. Roque and badminton. Take Southern Pacific to Phoenix, Arizona, where you will be met by appointment, without charge. Charge for trunks.

WILD HORSE RANCH. Mrs. Howard W. Miller, manager. Mail address, Cortaro, Arizona. Telegraph address, Tucson, Arizona. Season, November 15 to April 15. 20 guests. Rates \$6 to \$10 per day; children \$4 to \$8 per day. \$40 to \$60 per week; children \$25 to \$45 per week. Prefer not to take children under 10. No charge for saddle horse. Accommodations in main ranch house and cottages. Gas heat, electric light, private or detached baths. Badminton, croquet, bowling, horseshoes, indoor games. Public school 6 miles from ranch. Take Southern Pacific to Tucson, Arizona, where you will be met by appointment, without charge. Trunks \$1. Depot to ranch, 12 miles.

WRANGLER'S ROOST. S. Portland Halle, owner-manager. Mail and telegraph address, Black Canyon Stage, Phoenix, Arizona. Season, October 1 to May 15. 12 guests. Rates, \$45 to \$55 per week. Children under 10, half rate. Reductions for extended stays. No charge for saddle horse. Accommodations in main ranch house and cottages. Steam heat, electric light, private or detached baths. Public school 1½ miles from ranch. Hunting, fishing and pack trips by special arrangement. Take Southern Pacific to Phoenix, Arizona, where you will be met by appointment without charge. Charge for trunks or excessive hand baggage. Depot to ranch, 38 miles.

Y-LIGHTNING RANCH. Mr. and Mrs. F. B. Moson, owners. Mail and telegraph address, Hereford, Arizona. Open all year. 28 guests. Winter rates \$40 and up per week; \$155 and up per month. Children under 8, half rate. Saddle horse, \$7 per week; \$25 per month. Summer rates are lower. A cattle ranch of 25,000 acres among mountains on gently sloping mesa. Altitude, 4,880 feet. Riding, dancing, billiards, picnics, ranch activities. Public school 15 minutes by auto. Take Southern Pacific to Hereford, Arizona, where you will be met by appointment. Depot to ranch, 7 miles.

CALIFORNIA GUEST RANCHES

B-BAR-H RANCH. Charles F. Bender, manager. Mail address, Garnet, California. Telegraph address, Garnet or Palm Springs, California. Season October 15 to May 1. 60 guests. Rates, \$14 per day, single, and \$24 per day, double, including guides, pack trips and saddle horse. Take Southern Pacific to Palm Springs, California, where ranch car meets you without charge. Distance Palm Springs to ranch, 15 miles. Horseback riding, swimming, tennis, badminton, ping-pong, archery, billiards, hiking.

DEEP WELL GUEST RANCH. Frank H. Bennett, manager. Mail and telegraph address, Palm Springs, California. Season, October to June. 60 guests. Guests housed in bedrooms, suites, cottages. Rates \$8 to \$15 per day, single; \$15 to \$20 per day, double. All American plan. Saddle horses and guides extra. Take Southern Pacific to Palm Springs, Calif., where you will be met by appointment without charge. Distance, station to ranch, 12 miles. Horseback riding, paddle tennis, badminton, ping-pong, picnics, swimming pool.

DEL MONTE RANCH. Drury Saunders, manager. Mail address, Monterey, California. Telegraph address, Carmel, California. Open all year. 40 guests. Single or double rooms, with bath or shower. Rates, \$8 per day or \$50 per week, American plan. Saddle horses, \$3 per day. Guides, \$5 per day. Take Southern Pacific to Monterey or Salinas, California, where ranch car meets you by arrangement, at a cost of \$2.50. Ranch is beautifully situated in the Santa Lucia Mountains. Fishing, hunting in season, hiking, riding, swimming, boating, golf at nearby Del Monte.

HUNEWILL CIRCLE H GUEST RANCH. Stanley H. Hunewill, manager. Mail and telegraph address, Bridgeport, California. Season, May 1 to November 1. 24 guests. Accommodations in ranch house and nearby sleeping cabins. Electric light. An operating cattle ranch of about 5000 acres, informal but comfortable. Rates \$47.50 per week, single; \$42.50 each per week, double, American plan, including saddle horses. Take Southern Pacific to Reno, Nevada, bus from Reno to Bridgeport, where ranch car will meet you by arrangement, without charge. Reno to Bridgeport, 115 miles; Bridgeport to ranch, 6 miles. Riding, fishing, swimming, hiking, ranch activities.

LA PAZ GUEST RANCH. Mail address, Palm Springs, California. Located two miles from the heart of Palm Springs. La Paz is completely modern in its appointments. Every room commands a panoramic view of the surrounding desert and mountains. All rooms have private bath and electric heat. Combination bedroom and living room suites available. American plan. Heated swimming pool, tennis, badminton, ping-pong, riding, children's wading pool and playground. Write ranch direct for information or reservations. Take Southern Pacific to Palm Springs, where ranch car meets guests by prearrangement. Depot to ranch, 11 miles.

MARSHALLIA GUEST RANCH. Morgan S. Tyler, manager. Mail and telegraph address, Casmalia, California. Open all year. 30 guests. Rooms single or en suite. Tub and shower baths. Electric light and heat. Rates, \$50 and up per week, single; \$100 and up per week, double. Take Southern Pacific to Casmalia, California, where trains met by appointment—no charge. Casmalia to ranch, 5 miles. Rates are American plan and include horses and everything the ranch has to offer, except purely personal expenses. A cattle ranch of 42,000 acres, with 14 miles of Pacific Ocean frontage, rolling hills, mountains and wooded country.

PIERSON WONDER VALLEY RANCH. George Weston Pierson, managing owner. Telegraph address, Del Piedra, Calif. Mail address, Star Route, Box 54B, Sanger, California. Open all year. 20 guests. Accommodations in air-conditioned ranch house. Electric lights, hot and cold water and baths. Also in rustic cabins, with stone fireplaces, running water, tub and shower baths. Rates: in ranch house, \$35 and up per week, single; \$65 and up per week, double, without private bath. In cabins: \$42 per week, single; \$79 per week, double, with private bath. Special low rates for a visit of four weeks or longer. No charge for horses on regular daily rides. Take Southern Pacific to Fresno, California, where ranch car will meet you by appointment. Fresno to ranch, 34 miles. No charge for transportation to ranch and return to Fresno. Swimming, riding, canoeing, fishing and hunting in season, hiking and all other out-door activities that go with a western cattle and horse ranch.

RANCHO CARMELO. K. D. Mathiot, owner. Mail address, Monterey, California. Telegraph address, Carmel or Monterey, California. Open all year. 40 guests. Rates, \$40 and up per week, single; \$35 each and up per week, double. If saddle horses not desired, all rates \$5 per person less per week. Take Southern Pacific to Monterey, California, where trains met by appointment for a reasonable charge. Monterey to ranch, 20 miles. Riding, swimming, hunting, fishing.

RANCHO HACIENDA. John Marshall, owner. Located 35 miles east of Oakland, California, on the eastern slope of the Coast Range Mountains. Mail address, Pleasanton, California. Open all year. 100 guests. Rates \$46 to \$52 per week, single, everything included—room, meals, swimming, golf, tennis and transportation from Southern Pacific station at Pleasanton (2 miles) to the ranch. Also, riding, hunting, fishing, dancing, ranch parties.

SAN YSIDRO RANCH. Alvin C. Weingand, proprietor. Mail address, Santa Barbara, Calif. Located in the foothills above Montecito, six miles from Santa Barbara, Calif. The ranch also has a beach cottage on the Pacific shore, two miles distant, for the exclusive use of

its guests. Riding horses, swimming pool, badminton, tennis; playground and frontier shack for children. The ranch accommodates 60 guests. Cottages vary in size from one to eight rooms. Complete information and rates furnished on application. Take Southern Pacific to Santa Barbara, Calif.

SMOKE TREE RANCH. C. E. Gordon, manager. Mail and telegraph address, Palm Springs, California. Season, October 15 to May 15. 50 guests. Detached cottages, each room with private bath. Many cottages with private living room and fireplace. Rates: \$56 and up per week, single; \$98 and up per week, double. Saddle horses \$5 per day, \$17.50 per week, \$45 to \$60 per month. Also by the hour. Pack trip rates on application. Take Southern Pacific to Palm Springs, California, where ranch car will meet you by arrangement. Fare, Palm Springs to ranch (13 miles), \$4. Horseback riding. Desert and mountain hiking, badminton, tennis, swimming (separate children's pool), automobile trips, nature study, breakfast rides, picnics.

NEVADA GUEST RANCHES

FLYING N RANCH. Buck and Kaye Nielsen, owners. Mail address, P. O. Box 1855, Reno. Open all year. Limited accommodations. Rates \$40-\$45 per week, include comfortable rooms with adjoining bath, excellent meals, daily transportation to and from Reno, picnic trips to places of interest and riding with guide. Swimming on ranch. Southern Pacific trains met at Reno by appointment without charge. Ranch located 5 miles from Reno. An operating stock ranch.

LONE STAR RANCH. J. L. Hash, owner. Mail and telegraph address, Reno, Nevada. Open all year. Rates, \$20 to \$25 per week. Saddle horses at reasonable rates. Take Southern Pacific to Reno, Nevada, where ranch car meets you by arrangement—no charge. Reno to ranch, 3 miles. A comfortable home, where guests find rest, quiet and excellent home cooking. Riding, hot springs, swimming, trap shooting.

MONTE CRISTO RANCH. Molly McGuire, manager. Mail and telegraph address, Reno, Nevada. 20 guests. Take Southern Pacific to Reno, Nevada, where ranch car will meet you by appointment. Reno to ranch, 35 miles. Rates, \$35 to \$50 per week, American plan. Special rates for children. Comfortable ranch house and cabins, with all modern conveniences. Pack trips, rodeos, roping, riding, hiking, swimming, boating, fishing, picnics, motor trips, hunting in season.

PYRAMID LAKE RANCH. Pat Pattridge, manager. Mail address, Reno, Nevada. Telegraph address, Reno, Nevada. Open all year, 60 guests. Cabin tents; rooms with and without bath; private cottages. Rates: \$5.50 to \$10 per day, single; \$10 to \$18 per day, double, including horses. Daily station wagon service, ranch to Reno, no charge to guests. Take Southern Pacific to Reno, where you will be met by appointment. Located on the Piute Indian reservation, elevation 3783 feet. Horseback riding, swimming, fishing, hiking, sunbasking, trips to places of interest.

TH RANCH. Neill West, owner. Mail and telegraph address, Reno, Nevada. Open all year. 50 guests. Comfortable accommodations in cabins, with or without private bath. Rates, \$40 to \$50 per week, including guide and horses. Pack trips extra. Take Southern Pacific to Reno, Nevada, where ranch car meets you by appointment, without charge. Reno to ranch, 35 miles. Elevation 4,600 feet. Riding, hiking, swimming, fishing and hunting in season. A genuine cattle ranch.

VALLEY RANCH. Geo. and Mabel McGinnis, managers. Mail address, Route 1, Box 206, Reno, Nevada. Open all year. Rates begin at \$35 per week, and include saddle horses, regular trips to Reno, pack trips and picnic trips. Accommodations in main ranch house and

cabins. Telephone and electricity. Bath in every cabin. Take Southern Pacific to Reno, Nevada. Trains met on request. Reno to ranch, 7 miles.

WASHOE PINES RANCH. Deborah Hull, manager. Mail address, Franktown, Nevada. Open all year. 15 guests. Accommodations in single and four-room, two-bath cabins. Central heating. Hot water. Private baths. Rates, \$45 to \$75 per week, include all services, saddle horses, trail trips with guides, picnics, etc. References exchanged. Take Southern Pacific to Reno, Nevada. Ranch car meets trains by appointment.

NEW MEXICO GUEST RANCHES

BEAR MOUNTAIN RANCH. Mrs. Inez G. Horton, owner and operator. Mail address, Silver City, N. M. Open all year. Summer season, May 1 to October 31. Winter season, November 1 to April 30. Rates on request. Swimming, tennis, golf, ping-pong, backgammon, croquet and badminton court, riding, pack trips. Take Southern Pacific to either Deming or Lordsburg, New Mexico, connecting with Parrish Stage Lines.

BONNELL RANCH. Mr. and Mrs. B. J. Bonnell, owners. Mail address, Glencoe, N. M. Telegraph address, Capitan, N. M. Open all year. 30 guests. Rates, \$3.50 per day, \$20 per week, \$60 per month, American plan. Saddle horses, \$5 per week. Guide, \$2 per day. Pack trips—rates on application. Take Southern Pacific to Alamogordo, N. M. Daily stages from Alamogordo stop at ranch—distance 63 miles. Horseback riding, hiking, tennis, fishing, hunting in season.

C X RANCH. Mrs. Angie Cleve, manager. Mail address, Elk, N. M. Telegraph address, Artesia, N. M. Open all year. 7 guests. Rates, \$25 per week, \$65 per month, including saddle horse. Take Southern Pacific to Alamogordo or Cloudcroft, N. M. Auto fare, depot to ranch, \$2.50. Ranch is short distance from Mescalero Indian reservation and Carlsbad Caverns. Riding, hiking, hunting, fishing. Altitude, 6500 feet.

CAMP JINGLING SPURS. Post office address, Mayhill, New Mexico. Mary L. White, director. For girls 10 years up. Horseback riding and pioneer camping experiences stressed. 8,000-ft. elevation in heavily-wooded area of Sacramento Mountain, 40 miles from Alamogordo, New Mexico. Girls with previous camping experience given new experiences. Season June 10 to August 15. Rate \$25 per week. Take Southern Pacific to Alamogordo, New Mexico. Transportation to camp and return to Alamogordo \$10.

HAL RANCH. Mr. and Mrs. Hal R. Cox, owners and managers. Mail address, P. O. Box 670, Las Cruces, N. M. An operating cattle ranch. Open all year. Rates \$30 per week per person; with private bath \$35 per week. Use of saddle horse included. Hot and cold running water, electricity, individually controlled heat in each room. Take Southern Pacific to El Paso, Texas. El Paso to ranch, 65 miles.

MI CASA. Mrs. Osborne C. Wood, manager. Mail and telegraph address, La Luz, New Mexico. Open all year. 12 guests. Large, sunny rooms with open fireplaces. Rate \$50 per week. Saddle horse, guides and pack trips extra. Situated in old Mexican village, founded in 1719. Sacramento Mountains behind it and desert with famous White Sands National Monument at its feet. Riding, swimming in modern pool, picnics. Guests accepted only by advance arrangement. Take Southern Pacific to Alamogordo, N. M., where ranch car will meet you by appointment, without charge. Alamogordo to ranch, 8 miles.

MULE SHOE GUEST RANCH. Mary L. White, manager. Mail address, Mayhill, New Mexico. Season, May 1 through November. Rates, \$30 per week and up, American plan. Saddle horse 75c per hour, \$15 per week. Pack trips additional. Accommodations in frame

building; running water in all rooms; bath and showers—some rooms connecting. Wood stoves, gas lanterns. Take Southern Pacific to Alamogordo, N. M., where ranch car will meet you by appointment. Depot to ranch 40 miles.

T V BAR RANCH. Mr. and Mrs. Tom Threepersons, proprietors. Mail address, Gila, N. M. Telegraph address, Silver City, N. M. Open all year. 15 guests. Rate, \$7 per day, including horse. Pack trips extra. Take Southern Pacific to Deming, N. M. Ranch car will meet you at Silver City, N. M., without charge. Silver City to ranch, 31 miles. Altitude 5,000 feet. Riding, hiking, swimming, fishing, picnics, ranch activities.

OREGON GUEST RANCHES

H BAR H RANCH. J. H. McKennon, manager. Mail address, Wren, Oregon. 16 guests. Located 11 miles from Corvallis, Oregon. Located in the green valleys and fir-clad mountains of the Coast Range. Accommodations in spacious modern ranch house with true western atmosphere. Family-style cooking, informal dining. Badminton, tennis, hiking, riding, pack trips, mountain climbing, hunting and fishing in season. Weekly rate, \$40 per person, American plan, including saddle horse and guide service. For further information write the ranch.

TEXAS GUEST RANCHES

CIRCLE R GUEST RANCH. Mr. and Mrs. Mike Robinson, owners. Mail address, Medina, Texas. Open all year. 40 guests. Located in the hills of Bandera County, elevation 2000 feet. The Medina River runs through the ranch. Fishing and hunting in season. Riding, polo, tennis, badminton, ping-pong, croquet, archery, swimming. Accommodations in cottages. The lounge, dining hall, library and recreation hall are located in the main lodge. Rates from \$25 to \$75 per week, American plan, depending upon accommodations. Children under 8, half rate. Saddle horses extra. Take Southern Pacific to San Antonio, Texas, where the ranch station wagon will meet you by prearrangement.

EL RANCHOTEL. Dean Carpenter, manager. Mail and telegraph address, El Paso, Texas. Open all year. Thirty rooms in detached cottages, each having 3 or 6 separate rooms. Each room has private tub and shower. Rates, October to May, \$5 to \$9 single; \$6 to \$10 double, European plan. May to October, \$3 to \$6, single; \$4 to \$7, double, European plan. Weekly rates six times daily. Monthly rates four times weekly. For American plan add \$3 per day per person straight. No charge for meals not taken under American plan. The convenience of a hotel, the informality of a club lodge and the diversions of a guest ranch. Tennis, swimming (in season). Riding horses, shuffleboard, ping-pong, picnics, barbecues, chuck wagon, music, dancing, cocktail room. Full arrangements for guaranteed game hunting in Old Mexico—several weeks' advance notice required. Take Southern Pacific to El Paso, Texas, where station wagon will meet you. Depot to El Ranchotel, 8 miles.

GALLAGHER RANCH. Mrs. V. H. McNutt, owner-manager. Mail address, P. O. Box 1138, San Antonio, Texas. Telegraph address, Gallagher Ranch, San Antonio, Texas. Open all year. 45 guests. Rooms single or en suite, each with bath. Also girls' dormitory. Rates, \$35 to \$80 per week, including guide and horse. Located in wooded hill country, elevation 1550 feet. A 10,000-acre cattle, goat and sheep ranch. Riding with cowboys, picnics, swimming pool, barbecues, ping-pong, billiards, indoor badminton. Take Southern Pacific to San Antonio, Texas, where ranch car meets you by appointment—no charge. Depot to ranch 30 miles.

MAYAN RANCH. Mail address, Bandera, Texas. Open all year. Accommodations in private rock houses, twin ranch house and bunkhouse. Located 48 miles west of San Antonio, in the hill country. Horseback riding, sunrise breakfasts, moonlight weenie roasts, ranch sports, dances, trail trips, hikes, swimming, tennis, ping-pong, croquet. Write the ranch for full particulars and rates. Take Southern Pacific to San Antonio, Texas, where you will be met by prearrangement.

MITRE PEAK GUEST RANCH. Arthur Blucher, proprietor. Mail and telegraph address, Alpine, Texas. 35 guests. Season June 15 to September 15. Limited number of guests by special arrangement out of season. Rates, \$20 per week and up, per person, American plan. Saddle horses additional; rates per hour or week. Hiking, swimming and other outdoor activities. Take Southern Pacific to Alpine, Texas, where ranch car meets you by appointment, without charge. Alpine to ranch, 13 miles.

PRADE GUEST RANCH. Mr. and Mrs. E. T. Prade and Son, owners and operators. Address, Prade Ranch, Texas. Open all year. Rates \$30 to \$35 per week, including guides and horses. Electricity, sewerage, hot and cold water, connecting or private baths. Accommodations in rock cabins with twin beds and fireplaces. Working ranch of 10,000 acres, with 8 miles of the Frio River through ranch property. Swimming, fishing, picnics, badminton, shuffleboard, croquet. Deer and turkey hunting Nov. 15 to Jan. 1 for which there is an extra charge. Take Southern Pacific to Sabinal or Uvalde, Texas, where ranch car will meet you by appointment. Charge, depot to ranch, \$5.

WALDEMAR GUEST RANCH. Miss Doris Johnson, manager. Mail address, Hunt, Texas. Telegraph address, Kerrville, Texas. Season, December 1 to April 1. 35 guests. Accommodations in main lodge and rock cottages. Rates, \$50 to \$60 per week. Discounts for stays of one month or more. Take Southern Pacific to San Antonio, Texas. San Antonio to ranch, 85 miles. Horseback riding, fishing, archery, canoeing, target shooting, golf course available, ping-pong, quoits, tennis, billiards.

RESORT HOTELS

Those who wish to winter in the Southwest but do not care for guest ranch life will find in Southern Arizona a number of high-class winter resort hotels and smaller lodges providing the best of accommodations and service combined with delightful suburban surroundings, in a climate that makes outdoor life enjoyable the winter through. A list of such resorts follows:

ADOBE HOUSE. Mildred J. Bartholow, manager. Mail address, Scottsdale, Arizona. Telegraph address, Phoenix, Arizona. Season begins Oct. 1. 12 guests. Rate \$50 per week, American plan. An old Spanish adobe house equipped with every modern convenience. Also a tower house containing two additional rooms. Atmosphere of a home with only guests accepted of high reference. 11 miles from Phoenix, Arizona. Take Southern Pacific to Phoenix, where you will be met by appointment.

ARIZONA BILTMORE. 8 miles northeast of Phoenix. Mail and telegraph address, Phoenix, Arizona. Season, November 1 to May 1. About 300 guests. Rates, \$16 and up per day, single; \$26 and up per day, double, American plan. Accommodations in main building, cottages or individual houses. A modern structure of concrete on a 1,350-acre desert tract. Tennis, swimming, golf, skeet shooting, riding, picnicking, Keeno in evenings. Nightly supper dansant. Take Southern Pacific to Phoenix, Arizona, where you will be met by arrangement. Depot to hotel \$3. Trunks extra. Harry Boyle, manager.

ARIZONA INN. 2½ miles northeast of Tucson. Mail and telegraph address, Tucson, Arizona. Season, November to May. 100 guests. Rates \$12 and up per day, single; \$22 and up per day, double. American plan. Children under six, half rate. A desert resort of Spanish and Indian architecture, built in a circle around a patio. Accommodations in cottages. Large rooms, twin beds, private baths, sun porches, private entrances. Har-Tru tennis courts, badminton court, putting green, archery and sheltered warm water swimming pool. M. Bennet, manager.

CAMELBACK INN. 11 miles northeast of Phoenix. Mail and telegraph address, Phoenix, Arizona. Season, October 1 to May 15. 125 guests. Rates, \$12 and up per day, single; \$20 and up per day, double. American plan. Guest rooms in Spanish-type bungalows, arranged for occupancy single or en suite. Oil furnace heat, private baths, room phones, Western Union service. Riding, badminton, shuffleboard, ping-pong, croquet, tennis, weekly rodeos, square dancing twice weekly. Warm water swimming pool, cocktail lounge. Popular with children and younger people. Take Southern Pacific to Phoenix, Arizona, where you will be met by appointment. Depot to the Inn \$3 for two guests. Trunks extra. Jack Stewart, proprietor.

EL CONQUISTADOR HOTEL AND COTTAGES. Situated on a landscaped estate 3 miles from downtown Tucson, Arizona. Accommodations for 125 guests. Private riding academy, tennis, swimming pool, golf course adjoining. Season, December 1 to May 1. Rates \$10 to \$16 per person per day, American plan. Write Charles A. Doherty, managing director, for booklet.

EL PORTAL. Roy Hanford, manager. Address, Mesa, Arizona. Season, October to May. All rooms with private bath. Connecting suites with sitting rooms available. Steam and hot air heat. Tournament tennis court, shuffleboard, badminton and putting green on hotel grounds. Swimming pool two blocks distant. Picnics, chuck wagon dinners on the desert, motor trips to Indian country. Fishing available in season. Take Southern Pacific to Mesa, Arizona.

INGLESIDE INN. Mail address, Phoenix, Arizona. Ten miles from Phoenix, with all the advantages of the desert climate. The Inn centers a large acreage of lawn, flowers and orange, olive and grapefruit trees in full bearing. Lounge, dining and service rooms in main building. Cottages conveniently near, but remote enough for privacy.

Steam heat. 60 guests. Golf, horseback riding, tennis, hikes, picnics, badminton, croquet. Season, November 1 to May 1. Rates, February and March: \$12 and up per day, single; \$16 and up per day, double. Other months: \$10 and up per day, single; \$14 and up per day, double. Take Southern Pacific to Phoenix, Arizona, where you will be met by appointment, without charge. Trunks, depot to Inn, \$1.50 each. Nat Head, proprietor.

JOKAKE INN. Mail address, Jokake, Arizona. Ten miles from Phoenix on southern slope of Camelback Mountain. Adobe construction. Cottages grouped around main building. All modern appointments. Central heating plant. Schools adjacent to Inn. 120 guests. Three excellent golf courses close by, riding, heated outdoor pool, tennis, hiking, picnicking, croquet, archery, indoor amusements. Season, October 15 to May 1. Take Southern Pacific to Phoenix, Arizona. R. T. Evans, proprietor.

MIAMI LODGE. Mr. and Mrs. Fred Kirchof, owners-managers. Mail address, Scottsdale, Arizona. Telegraph address, Phoenix, Arizona. Season, October 1 to May 15. 22 guests. Rates, American plan, \$56 per week, single; \$105 per week, double. A resort hotel with guest ranch facilities, situated in an orange grove. Shuffleboard, archery, badminton. Horses at hourly, daily, weekly or monthly rates. Ranch located 12½ miles from Phoenix. Elevation 1,200 ft. Take Southern Pacific to Phoenix, Ariz. Ranch car meets guests by appointment, without charge. Trunks, depot to lodge, \$2.50 each.

LODGE ON THE DESERT. Homer D. Lininger, manager. Mail address, Box 1151, Tucson, Arizona. Located on the desert, ten minutes from the heart of Tucson. Not a guest ranch or hotel, but a select lodge. 25 guests. Season, October 15 to May 15. Accommodations in the main lodge and patio houses. Single and double rooms with private bath. Rates, American plan, \$10 and up per day, single; \$18 and up per day, double. Badminton, swimming pool. Golf course close by. Take Southern Pacific to Tucson, Arizona, where you will be met by prearrangement, without charge. Charge for trunk transfer.

SAN MARCOS. Robert Foehl, managing director. Address, Chandler, Arizona. Season, December 1 to April 15. Accommodations in the hotel or private bungalows. Hotel rooms single or en suite. Bungalows steam heated; private baths, telephones and individual gardens. Size, two to six rooms. 18-hole, all-grass golf course, swimming, bicycling, archery, tennis, badminton, riding. Fishing and hunting nearby in season. Take Southern Pacific to Chandler, Arizona.

VAH-KI INN. Address, Coolidge, Arizona. A small, exclusive, modern Inn on the outskirts of the town. Buildings of adobe in Spanish Colonial style, adjoining the Casa Grande National Monument. Season, October 1 to May 1. 15 guests. Rates, American plan, \$40-\$45 per week, per person. Saddle horse, \$10 per week. Accommodations in main building and nearby cottages. Riding, tennis, swimming pool, picnics, trips to Indian reservation. Take Southern Pacific to Coolidge, Arizona, where you will be met by prearrangement. Trunks, depot to Inn, 75c. Walter C. Smith, proprietor.

THE WIGWAM. Murray Stevenson, manager. Mail and telegraph address, Litchfield Park, Arizona. Season, December 1 to May 1. 100 guests. Rates, American plan, \$9 to \$18 per day, single; \$16 to \$26 per day, double. Children under 6, half rate. Saddle horses by the hour, week or month. Accommodations in bungalows surrounding the main Wigwam. The Wigwam is located in the heart of a 17,000-acre ranch, its buildings surrounded by over forty acres of landscaped lawn, palms, citrus and other tropical trees and shrubs. Combines the best features and services of the inn, hotel and guest ranch. Good schools nearby. Golf course, tennis, swimming pool, horseback riding, badminton, bowling, croquet, shuffleboard, bicycling. Take Southern Pacific to Phoenix or Litchfield, Arizona, where you will be met by arrangement. Charge from Phoenix to hotel \$3; from Litchfield \$1.

RANCH SCHOOLS

Listed below are ranch schools located in southern Arizona. The balmy winter climate of this section, permitting an active outdoor life, is of inestimable benefit to adolescents.

The schools are staffed with competent instructors, and have high scholastic standards. The recreational activities of students are of the nature of those found on the guest ranch and are carefully supervised with the object of combining relaxation with physical development. These schools provide under one management the best features of both the guest ranch and the private school.

Pupils suffering from communicable diseases are not accepted.

ARIZONA DESERT SCHOOL. Address, P. O. Box 1351, Tucson, Arizona. Wallace H. Whitcombe, headmaster. For boys. Located in the foothills of the Catalina Mountains, 10 miles from Tucson. Resident pupils only. Ages accepted, 8 to 15. School year, October to May. Physician; resident nurse. Course of study prepares for entrance to the fourth form of leading college preparatory schools. Complete information furnished by the school on application. Take Southern Pacific to Tucson, Arizona.

ARIZONA SUNSHINE SCHOOL. Mr. and Mrs. P. W. Hodges, directors. Address P. O. Drawer 430, Tucson, Arizona. A practical outdoor school for children of discriminating parents. Day and resident departments. Students accepted from pre-school age through the eighth grade. Co-educational. Write the school for particulars. Take Southern Pacific to Tucson, Arizona.

BRANDES SCHOOL. Raphael Brandes, director. Mail address, Box 1685, Tucson, Arizona. Co-educational from 6 to 14 years. Resident and day students. Emphasis on specialized program of education, recreation and health care for children who go to Tucson primarily for the climate. Write school for particulars. Take Southern Pacific to Tucson, Arizona.

CORONADO RANCH SCHOOL. Leonard Hunting, director. Mail address, P. O. Box 2055, Tucson, Arizona. A home away from home for boys and girls 5 to 15. Located in the foothills of the Tucson Mountains, six miles from Tucson. Thorough progressive training and expert individual care. Complete information upon request. Take Southern Pacific to Tucson, Arizona.

EVANS SCHOOL. Address, Tucson, Arizona. For boys 12-19. 8th through 12th grades. Located 16 miles from Tucson in the foothills. 500-acre ranch. Resident and day pupils. School year, last Monday in September to third Thursday in May. School physician, resident nurse, infirmary. Accredited to leading colleges and universities. Spanish featured. Modern oil-heated dormitories.

FRESNAL RANCH SCHOOL. Address, Tucson, Arizona. Located on a 10,000-acre ranch, fifty-two miles from Tucson. Resident pupils. Accommodations for thirty-six boys between the 7th and 12th grades. Complete information furnished by the school on application. Take Southern Pacific to Tucson, Arizona.

THE GENEVA COLLEGE FOR WOMEN. Las Lomas, Tucson, Arizona. Located five miles from the city on Tucson Mountain. Three-year liberal arts college course with transfer credits. School year, October to May. Private stables, outdoor swimming pool, field trips, holiday travel to Mexico and the West. Address the college for catalogue. New York address: The Barclay, 111 East 48th Street.

GREEN FIELDS PREPARATORY SCHOOL FOR BOYS. G. H. Atchley, director. Address, P. O. Box 1471, Tucson, Arizona. School year September 26 to May 10. For boys 9 to 16, inclusive. Located 9 miles

from Tucson. Member of the Secondary Education Board, and all work is planned to meet the requirements of this grouping of schools. Pupils accepted on recommendation. Write the school for complete information. Take Southern Pacific to Tucson, Arizona.

HACIENDA DEL SOL. Address, Tucson, Arizona. For girls. Located in the Santa Catalina foothills, ten miles from Tucson. Resident pupils. Girls from 10 to 16. School year, October 1 to May 1. School doctor, registered nurse in residence. The lower school covers grades five through eight. The upper school covers grades nine, ten and eleven. Take Southern Pacific to Tucson, Arizona.

JOKAKE SCHOOL. Miss Lilius S. Bill, headmistress. Address, Jokake, Arizona. Located 10 miles from Phoenix, Arizona. School year, October 1 to May 3. Ages accepted: day school, 10 to 18; boarding school 12 to 18. The school offers a sound college preparatory course; also a general course for students not planning to enter college. Students in the lower school may enter for periods shorter than the full school year. For complete information write the school direct. Take Southern Pacific to Phoenix, Arizona.

JUDSON SCHOOL FOR BOYS. George A. Judson, director. Address, Box 681, Phoenix, Arizona. School year, October 1 through May 25. Located 12 miles northeast of Phoenix. Day and resident pupils from first grade through high school. The school has been given ranking by the North Central Association and many higher institutions of learning. Graduates are admitted to these colleges on recommendation of the director. Practical health education is stressed. Complete information by the school on application. Take Southern Pacific to Phoenix, Arizona.

PALO VERDE RANCH SCHOOL FOR BOYS. Address, Mesa, Arizona. Located 10 miles from Mesa, Arizona. School year, October 5 to June 5. Resident pupils, limited to 25. School physician, resident nurse, infirmary. Ages accepted, 6 to 16 years. This school also operates a summer camp at Escondido Lodge, Prescott, Arizona, for boys. Season, June 1 to September 1. Complete information furnished by the school on application. To reach the school, take Southern Pacific to Mesa, Arizona.

POTTER SCHOOL. Mail address, Tucson, Arizona. For girls. Grades 7 through 12, preparing for college or completing their academic education. Religious instruction, art, music, diversified recreation. Accredited. Resident and day pupils. School year, October to May. School doctor, resident nurse. Located at edge of the city near Santa Catalina foothills. Take Southern Pacific to Tucson, Arizona.

RUSSELL RANCH SCHOOL. Robert M. Russell, director. Mail address, Box 2472, Tucson, Arizona. Located 15 miles from Tucson. For boys' grades, 7 through 10. Curriculum based on requirements of Secondary Education Board and College Entrance Examination Board. Individual instruction, diversified activities, religious integration. School year from October to May. For particulars write the school. Take Southern Pacific to Tucson, Arizona.

SKULL VALLEY RANCH SCHOOL. Lancelot Minor Dent, director. Mail address, Skull Valley, Arizona. A 3,000-acre ranch at an elevation of 4,000 feet. Upper and lower schools giving special tutoring to those requiring it. Careful attention given to health, personal habits and character. Horseback riding, polo, trips, ranch life. Write the school for detail information. Take Southern Pacific to Phoenix, Ariz.

SOUTHERN ARIZONA SCHOOL FOR BOYS. Russell B. Fairgrieve, headmaster. Mail address, P. O. Box 1791, Tucson, Arizona. Located 16 miles northeast of Tucson. Resident pupils only. Extensive outdoor recreation activities under supervision. Physician, resident nurse, infirmary. All academic courses for college preparation from sixth through twelfth grades offered. School year, last week of September

to middle of May. The school is especially advantageous for growing boys or those who suffer from sinusitis and asthma. Boys are prepared to enter strong colleges in the East and West, and the college entrance board examinations are given at the school in June. Complete information furnished by the school on application. Take Southern Pacific to Tucson, Arizona.

THE THOMAS SCHOOL, INC. Winifred G. Thomas, president. Mail address, Route 2, Box 405, Tucson, Arizona. Co-educational. Ages accepted, 6 to 14 years, limited to 35 resident and 25 day pupils. School term, October 1 to May 3. Resident nurses and faculty. A private health school, particularly adapted for children with asthma, sinus, rheumatism, heart, infantile paralysis and similar trouble. For complete information write the school direct. Take Southern Pacific to Tucson, Ariz.

TUCSON SCHOOL FOR BOYS. Address, P. O. Box 2071, Tucson, Arizona. Resident and day pupils. School year, October to May. Thorough preparation for college and the college entrance board examinations. For complete information write the school direct. Take Southern Pacific to Tucson, Arizona.

VILLA CARONDELET. Catholic resident and day school for girls. Kindergarten through senior high school. Difference of religion no obstacle to enrollment. Swimming, riding and other sports of semi-ranch school with skilled director. Modern buildings, beautifully landscaped grounds. 8 miles east of Tucson. Write Registrar, Villa Carondelet, Tucson, Arizona. Take Southern Pacific to Tucson, Ariz.

MEXICO GUEST RANCHES

HACIENDA DE TERRENATES. An old Mexican cattle ranch, now open to hunters and non-hunters. It is located in the State of Chihuahua, Mexico, about 175 miles south of El Paso, Texas, in the Sierra Madre Mountains. The mountains are well stocked with white tail deer, cinnamon bear, mountain lion, turkey and quail. Water fowl abound in the small lakes. The ranch house has all modern conveniences, including electric light, refrigeration, heat and plumbing. Fully experienced men meet guests at El Paso, Texas, where all details as to passports, licenses, etc., are promptly and efficiently handled at a minimum expense. All legal formalities and requirements are under the supervision and co-operation of the Mexican Federal Game Warden, and the Tourist Department. For rates and details, address inquiries to G. B. Carmichael, Agent, Terrenates Ranch Office, Hotel Paso del Norte, El Paso, Texas.

RANCHO EL ALAMO. A walled, towered and terraced ivy-clad house of adobe and tile construction, in a valley surrounded by mountains. In the main building are large, comfortably furnished guest rooms, each with private bath, and an immense lounging room. Large enclosed pool—delightful swimming winter or summer. Sun deck on roof of main building. Riding, mountain climbing, swimming, hiking, picnicking, hunting and other sports. Winter season. 25 guests. Mail address, Magdalena, Sonora, Mexico. For rates and information, write the ranch. Take Southern Pacific to Nogales, Arizona; thence Southern Pacific R. R. of Mexico to Magdalena, Sonora, Mexico. Depot to ranch, 30 miles.

HOTEL PLAYA DE CORTÉS



A desert resort by the sea

A perfectly appointed resort hotel on the curving beach of Bacoichampo Bay, three miles north of Guaymas, Sonora, Mexico, world-famous deep-sea fishing center. The hotel has some of the characteristics of a desert resort, yet is but a stone's throw from the whispering surf, and has been so designed that there is a fine marine view from every guest room. Four private cottages supplement the hotel proper.

In summer there is an abundance of tuna, sailfish and swordfish in the Gulf of California. In winter, the bay teems with totuava, cabrillo, yellow-tail, bonita, etc. For those not interested in fishing, arrangements may be made for horseback riding and camp trips to nearby points in the mountains, which tower 1,500 feet behind the hotel. Fine salt water swimming pool in hotel patio. Badminton and tennis courts. Capacity, 60 guests. Rates begin at \$10 per day, U. S. currency, American plan. Season, December 1 to June 30. Located 260 miles south of Nogales, Arizona. Take Southern Pacific to Nogales, Southern Pacific R. R. of Mexico thence to Guaymas. Mail address, Apartado Postal 66, Guaymas, Sonora, Mexico, or get in touch with any Southern Pacific representative.